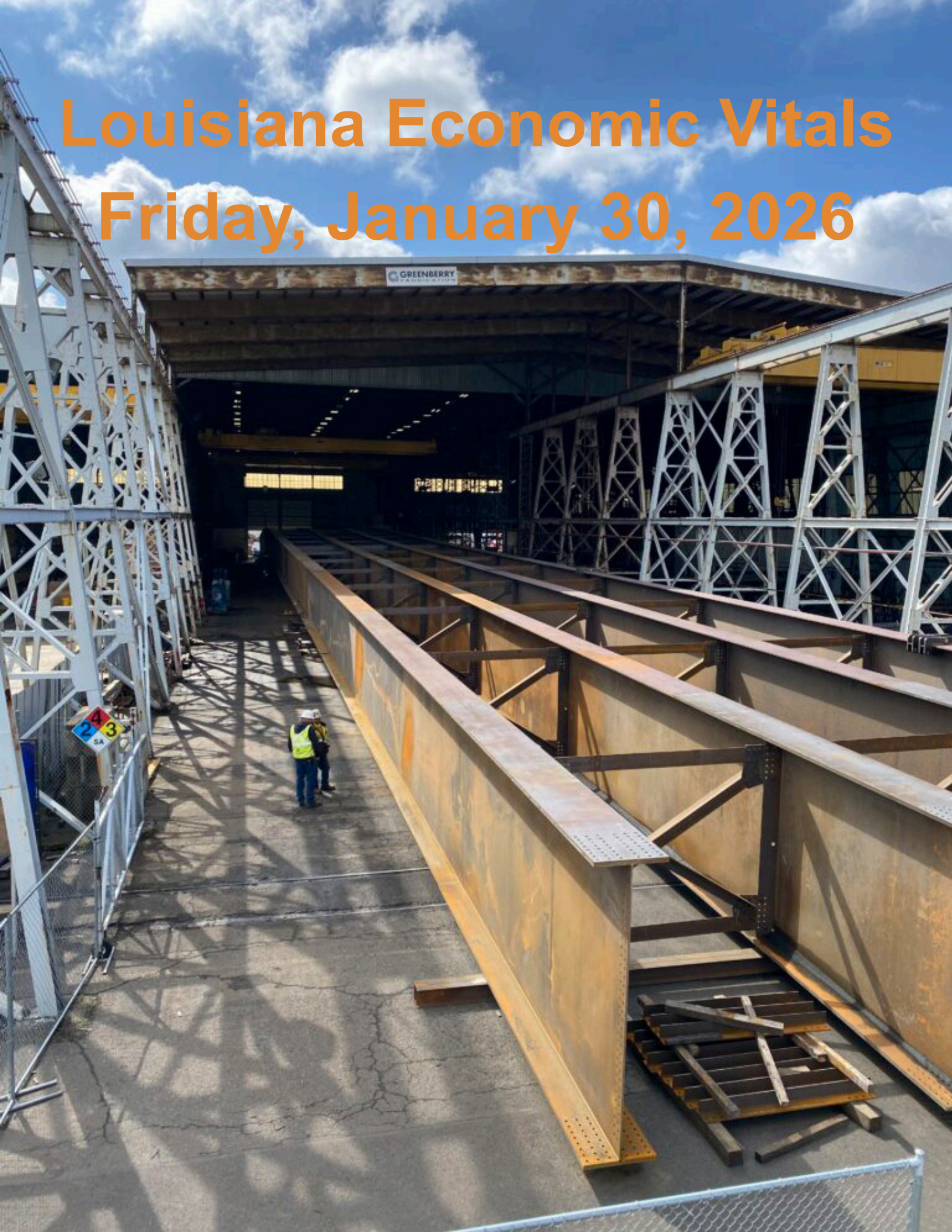


Louisiana Economic Vitals

Friday, January 30, 2026



PREFACE

Louisiana Economic Vitals is a weekly report prepared by LED's State Economic Competitiveness (SEC) team. This report provides readers with data from federal and state governmental entities, as well as other credible third-party sources. All data has been independently analyzed and summarized to ensure clarity, brevity, and practical utilization.

LOUISIANA ECONOMIC DEVELOPMENT JANUARY 2026 ANNOUNCEMENTS:

[Gov. Landry Announces Whole-of-Louisiana Energy Strategy, Positions State to Unleash Energy Dominance on a Global Scale](#)

January 22nd, 2026

[State of Louisiana and Persona AI Launch Humanoid Pilot at SSE Steel Fabrication](#)

January 22nd, 2026

[Newlab New Orleans Breaks Ground at Former Naval Support Activity Site](#)

January 21st, 2026

[Performance Health Partners Announces Acquisition by Sentact](#)

January 21st, 2026

[Viking Attachments Expands to Full-Scale U.S. Manufacturing and Testing Operations in Morgan City](#)

January 20th, 2026

[Ampirical Announces Groundbreaking for Headquarters Expansion](#)

January 16th, 2026

[Louisiana Attracts Major Walmart Reinvestment in Acadiana Distribution Center](#)

January 15th, 2026

[Louisiana NOW: A New Standard](#)

January 14th, 2026

[\\$450 Million ATALCO, Federal Partnership Revitalizes Louisiana Facility, Secures Critical U.S. Supply Chain](#)

January 13th, 2026

[Louisiana Impact Fund Launches to Keep Companies, Jobs & Wealth in Louisiana](#)

January 13th, 2026

[G-Unit Film & Television Louisiana, LLC, State Finalize Agreement for Entertainment Redevelopment in Shreveport](#)

January 12th, 2026

[Louisiana Wins Back-to-Back Platinum Deal of the Year, Signaling a New Era of National Competitiveness](#)

January 5th, 2026

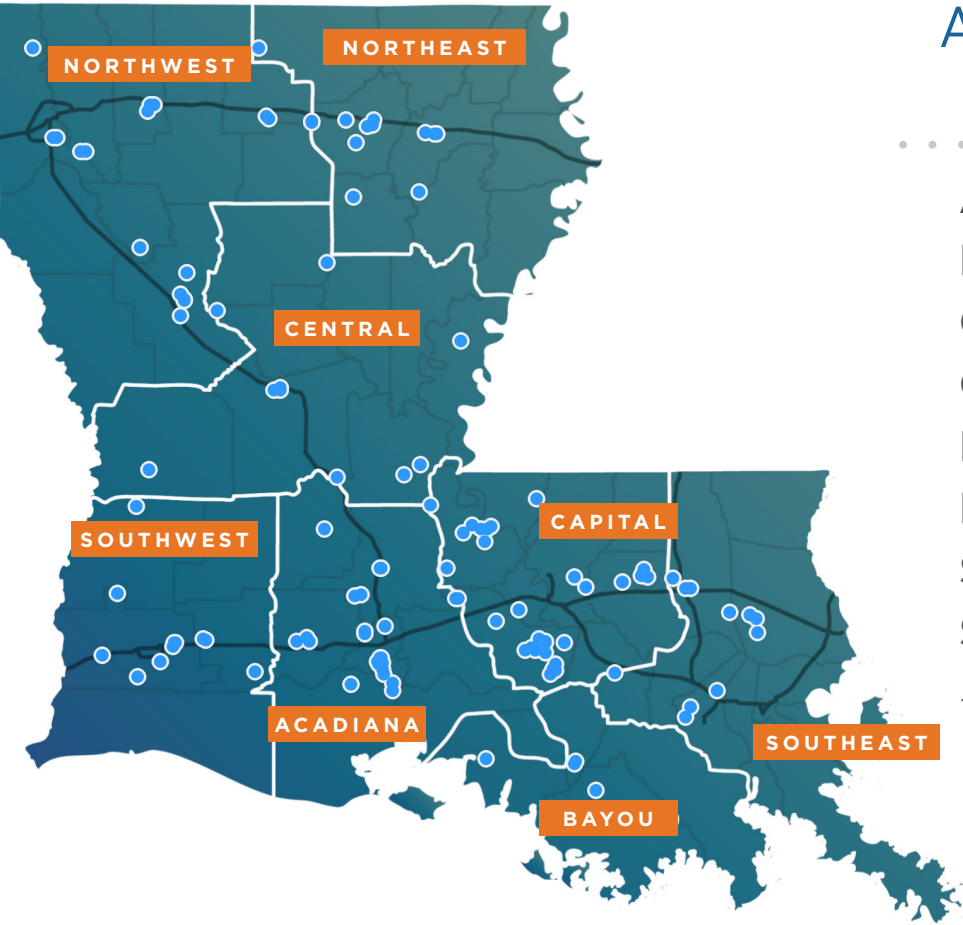
LED PROJECT PIPELINE

Since Governor Landry took office in January 2024, LED has announced 78 projects representing over \$76 billion USD in new investment and more than 11,760 direct new jobs across Louisiana.

As of January 30, 2026, LED is actively tracking and involved in 196 distinct projects with a combined value exceeding \$277.9 billion and the potential to create more than 52,200 direct new jobs.

CERTIFIED SITE PROGRAM

Since the launch of its Certified Sites Program, LED has certified 164 industrial sites, with all or portions of 36 sites advancing into active commerce. At full build-out, these projects represent more than \$34.5 billion in capital investment, over 6,350 direct new jobs, and more than \$407 million in total annual wages statewide. Currently, there are 125 actively marketed certified sites across every region of Louisiana.



Active Certified Sites by Region	
Acadiana	23
Bayou	6
Capital	25
Central	9
Northeast	13
Northwest	17
Southeast	18
Southwest	14
TOTAL 125	

1. LABOR MARKET ACTIVITY

The Job Openings and Labor Turnover Survey (JOLTS) program of the Bureau of Labor Statistics (BLS) publishes monthly estimates of job openings, hires, and separations for the U.S. and each state at the total nonfarm industry level. The survey data is designed to illuminate if there is a churn of workers moving to better opportunities, a dynamism that typically drives wage growth and economic momentum.

Source: [bls.gov](https://www.bls.gov)

Table 1. Louisiana Job Openings and Labor Turnover, Total Nonfarm (in Thousands)					
Category	Nov-25	Oct-25	Nov-24	Change	
				MoM	YoY
Job Openings	111	122	124	-9.0%	-10.5%
Hires	71	74	84	-4.1%	-15.5%
Quits	50	44	45	13.6%	11.1%
Layoffs and Discharges	20	25	24	-20.0%	-16.7%

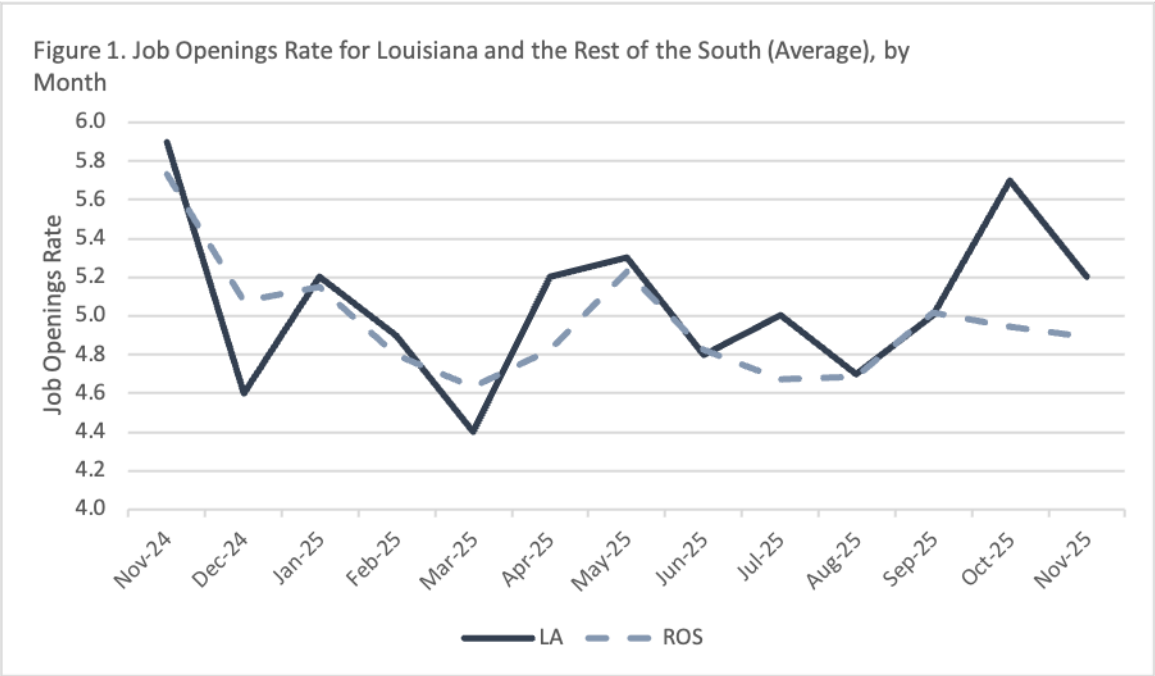
Note: November 2025 data are preliminary; Data are seasonally adjusted

Table 2. U.S. Job Openings and Labor Turnover - November, Total Nonfarm (In Thousands)					
Category	Nov-25	Oct-25	Nov-24	Change	
				MoM	YoY
Job Openings	7,146	7,449	8,031	-4.1%	-11.0%
Hires	5,115	5,368	5,307	-4.7%	-3.6%
Quits	3,161	2,973	3,032	6.3%	4.3%
Layoffs and Discharges	1,687	1,850	1,739	-8.8%	-3.0%

Note: November 2025 data are preliminary; Data are seasonally adjusted

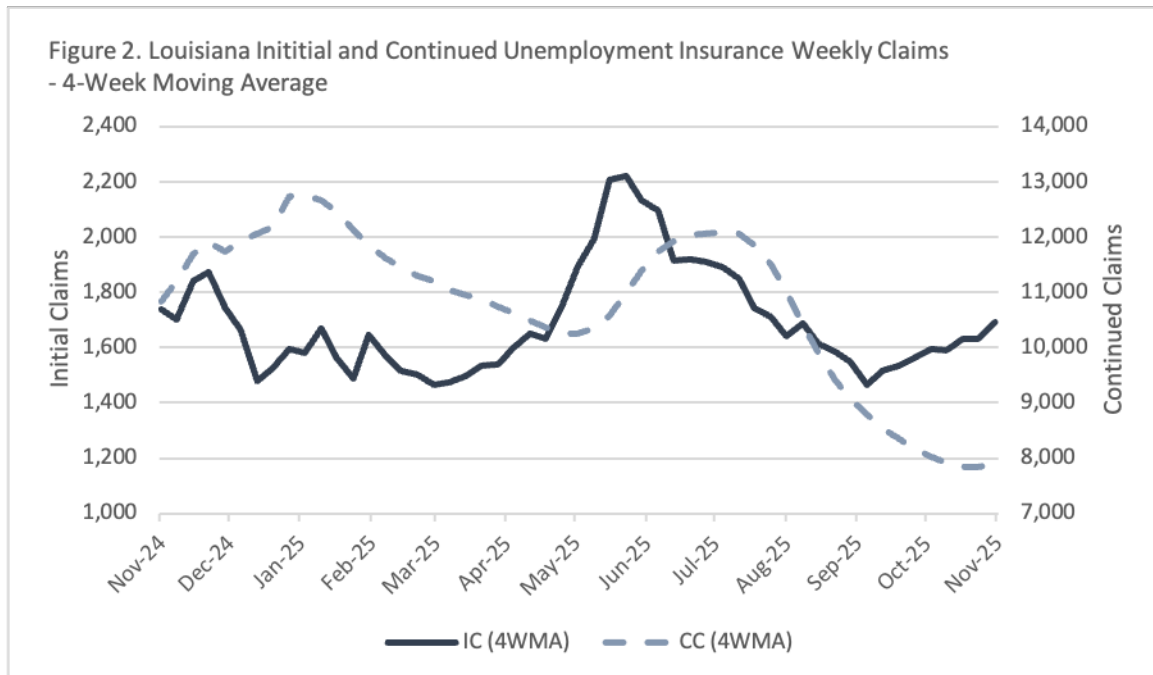
The job openings rate is computed by dividing the number of job openings by the sum of employment and job openings and multiplying that quotient by 100. The figure below shows the monthly job openings rate for Louisiana and the average for the rest of the South. The rest of the South includes: Alabama, Arkansas, Florida, Georgia, Kentucky, Mississippi, Missouri, North and South Carolina, Oklahoma, Tennessee and Texas.

Source: [bls.gov](https://www.bls.gov)



Initial claims represent people in Louisiana who are newly filing for unemployment benefits and are a leading indicator of labor market weakness. Continued claims represent people in the state who are still receiving benefits and they reflect the persistence of unemployment. If both initial and continued claims are rising together, it suggests new layoffs and difficulty finding new employment. If initial claims rise but continued claims remain stable or fall, it might indicate a short-term shock rather than a potential recession. Declining continued claims, even if initial claims stay elevated, could signal that people are getting back to work quickly, and if continued claims rise while initial claims fall, that could signal a slowing rate of new layoffs, but ongoing unemployment problems.

Source: laworks.net



2. COMMODITIES

The following tables provide data on the weekly prices of energy and agricultural commodities, reflecting the broader economic performance of these sectors.

Source: [eia.gov](https://www.eia.gov)

Table 3. Energy Commodities, Weekly					
Commodity	1/23/26	1/16/26	1/24/25	Change	
				WoW	YoY
Brent Crude Oil Price	\$66.99	\$67.00	\$79.92	-0.01%	-16.2%
WTI Crude Oil Price	\$60.16	\$60.12	\$75.73	0.1%	-20.6%
Henry Hub Natural Gas Spot Price*	\$12.02	\$3.00	\$5.47	300.7%	119.7%
U.S. Regular Conventional Gas Price	\$2.70	\$2.70	\$3.01	0.0%	-10.3%
<p>*Note: Extreme cold surged demand immediately, production fell due to freeze-offs, and expectations of a milder winter are causes for this week's sharp spot price increase for Henry Hub Natural Gas. US energy firms withdrew 242 billion cubic feet of natural gas from storage in the week ended January 23, 2026. Henry Hub spot is the price of gas that must flow right now and the market is screaming, "We are short right now." The weekly spot price tells us the volume-weighted average of daily physical spot transactions over the week. See reuters.com, rigzone.com, and tradingeconomics.com</p>					

Table 4. Agricultural Commodities, Daily Period of January 29, 2026							
Commodity	Listed Price	Dollar (\$)	Unit of Measurement	Change			
				Daily	Weekly	Monthly	YoY
Soybeans	\$1,071.39	\$10.71	\$/Bu	-0.3%	0.7%	2.4%	2.6%
Wheat	\$536.00	\$5.36	\$/Bu	0.0%	4.0%	4.9%	-5.4%
Lumber	\$595.47	\$5.95	\$/MBF	-0.3%	-0.8%	10.3%	3.2%
Palm Oil	\$4,318.00	\$43.18	\$/MT	1.1%	2.9%	6.1%	0.8%
Sugar (No. 11)	\$14.66	\$0.15	\$/Lb	-0.4%	2.1%	-1.3%	-24.6%
Coffee	\$345.43	\$3.45	\$/Lb	-1.6%	-0.7%	-1.4%	-8.2%
Corn	\$429.97	\$4.30	\$/Bu	-0.1%	1.4%	-2.4%	-12.1%
Rice	\$11.05	\$0.11	\$/CWT	0.3%	3.4%	16.6%	-20.7%
Orange Juice	\$226.05	\$2.26	\$/Lb	0.0%	3.5%	12.2%	-52.8%

3. LOUISIANA REAL ESTATE

Louisiana Realtors® produces monthly reports on local market updates for the state and its regions. The following figures illustrate regional new listings for single-family homes by month with a year-over-year comparison for 2023-2024 and 2024-2025. A list of parishes served by each regional entity is also provided.

Source: louisiana.stats.showingtime.com

Bayou Board of REALTORS® - Assumption, Lafourche, St. Mary, Terrebonne; Greater Central Louisiana Realtors® Association - Allen, Avoyelles, Catahoula, Evangeline, Grant, LaSalle, Natchitoches, Rapides, Winn;

Greater Baton Rouge Association of Realtors® - Ascension, East Baton Rouge, East Feliciana, Iberville, Livingston, Pointe Coupee, St. Helena, West Baton Rouge, West Feliciana;

Greater Fort Polk Area Realtors® - Beauregard, Sabine, Vernon;

New Orleans Metropolitan Association of Realtors® - Jefferson, Orleans, Plaquemines, St. Bernard, St. Charles, St. James, St. John;

Northeast Realtors® of Louisiana - Caldwell, Concordia, East Carroll, Franklin, Jackson, Lincoln, Madison, Morehouse, Ouachita, Richland, Tensas, Union, West Carroll;

Northwest Louisiana Association of Realtors® - Bienville, Bossier, Caddo, Claiborne, DeSoto, Red River, Webster;

Realtor® Association of Acadiana - Acadia, Iberia, Lafayette, St. Landry, St. Martin, Vermilion;

Southwest Louisiana Association of Realtors® - Calcasieu, Cameron, Jefferson Davis;

and, although not included

Northshore Area Board of Realtors® - St. Tammany, Tangipahoa, Washington

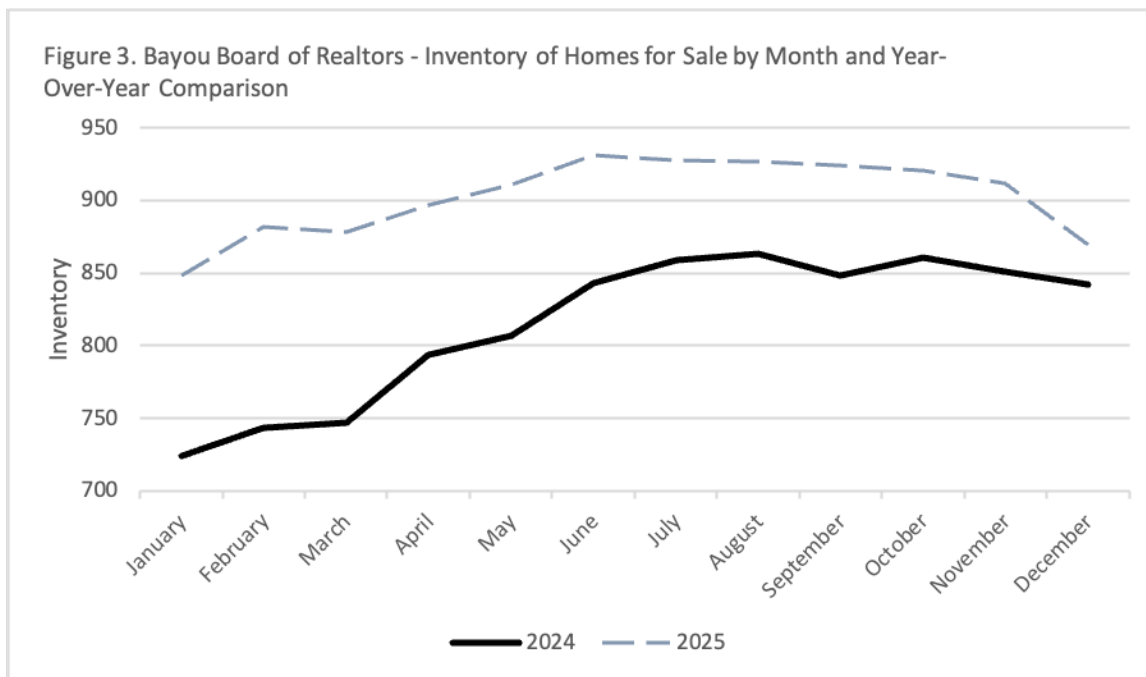


Figure 4. Greater Baton Rouge Association of Realtors - Inventory of Homes for Sale by Month and Year-Over-Year Comparison

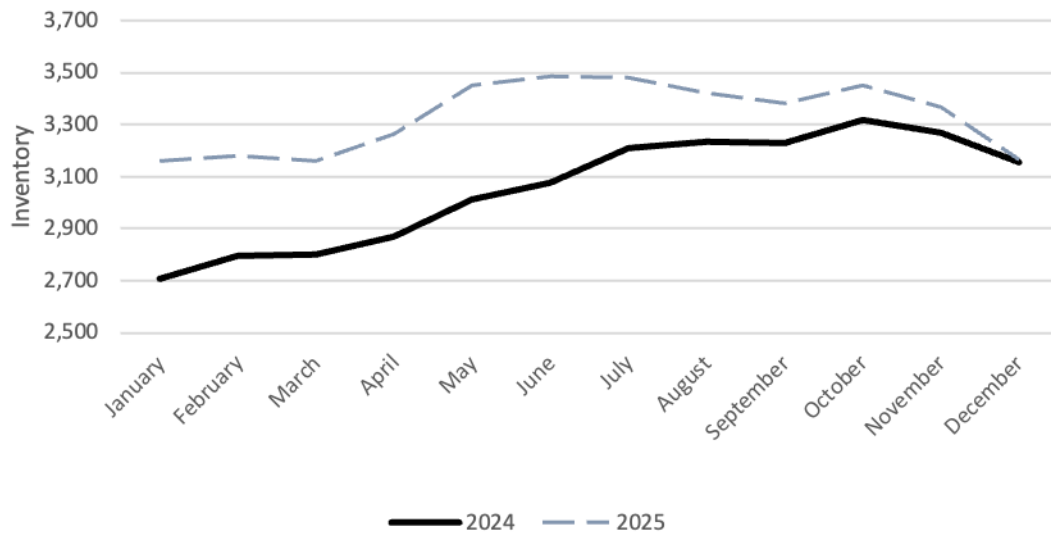


Figure 5. Greater Central Louisiana Realtors Association - Inventory of Homes for Sale by Month and Year-Over-Year Comparison

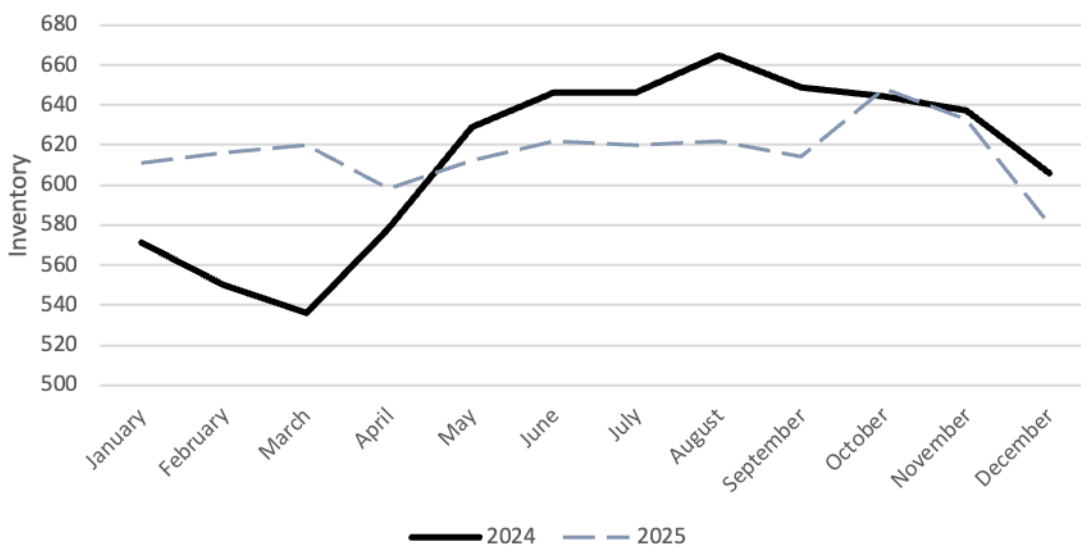


Figure 6. Greater Fort Polk Area Realtors - Inventory of Homes for Sale by Month and Year-Over-Year Comparison

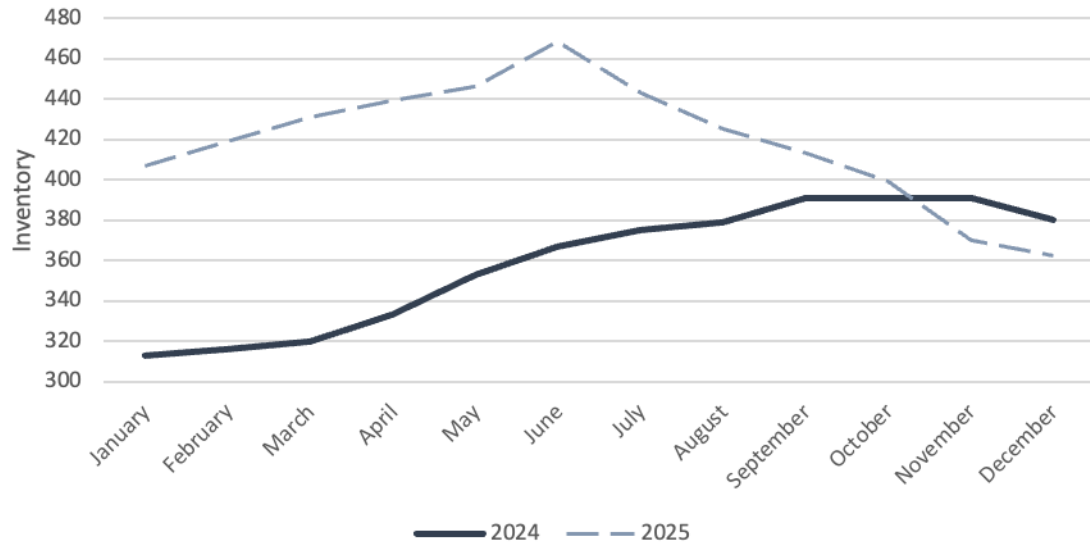


Figure 7. New Orleans Metropolitan Association of Realtors - Inventory of Homes for Sale by Month and Year-Over-Year Comparison

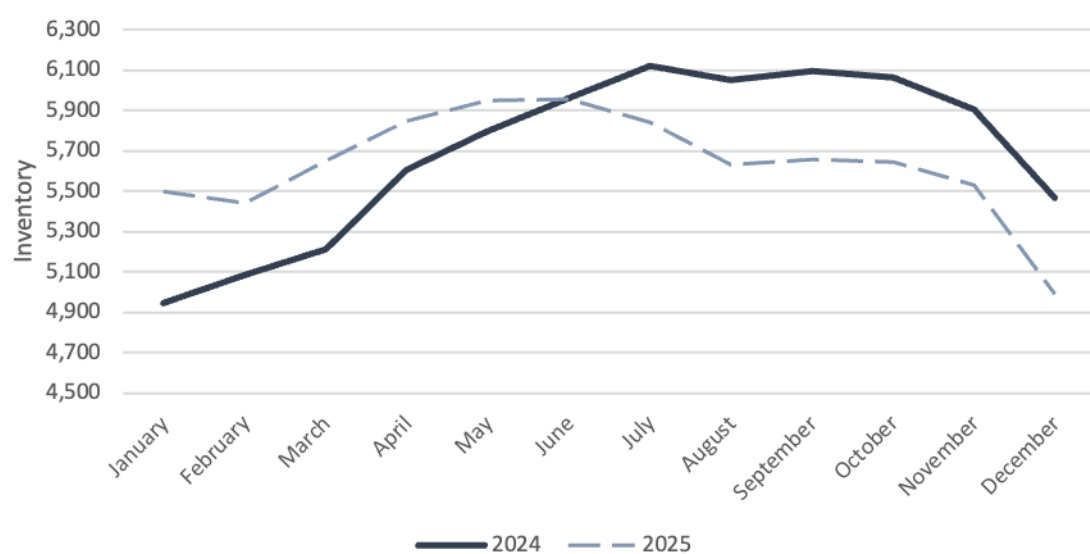


Figure 8. Northeast Realtors of Louisiana - Inventory of Homes for Sale by Month and Year-Over-Year Comparison

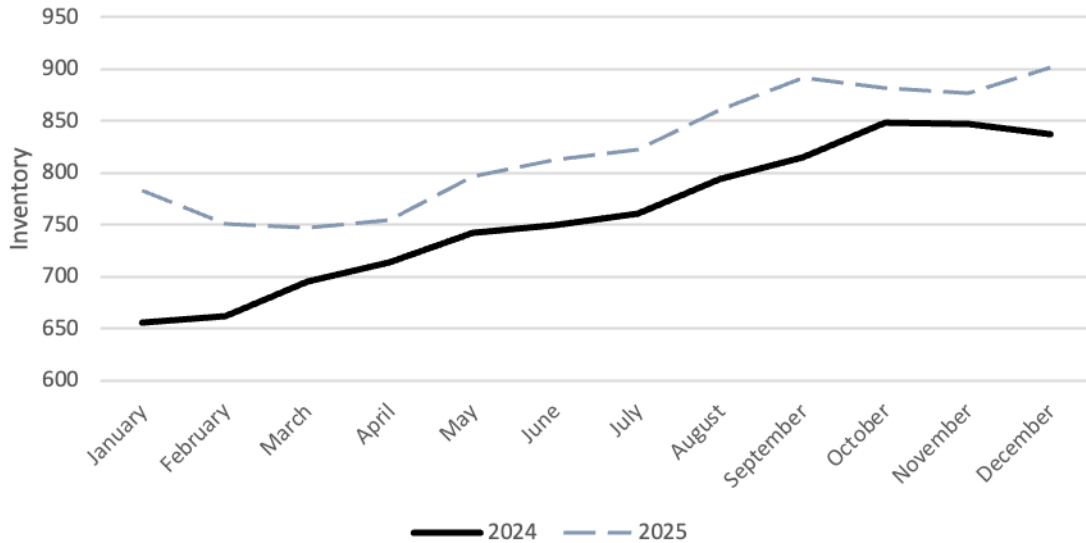


Figure 9. Northwest Louisiana Association of Realtors - Inventory of Homes for Sale by Month and Year-Over-Year Comparison

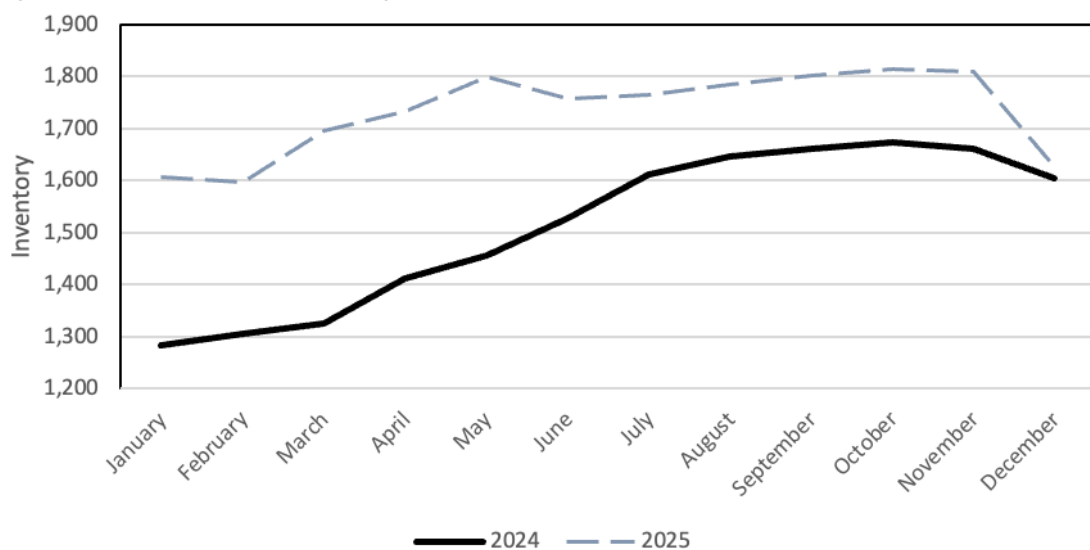


Figure 10. Realtor Association of Acadiana - Inventory of Homes for Sale by Month and Year-Over-Year Comparison

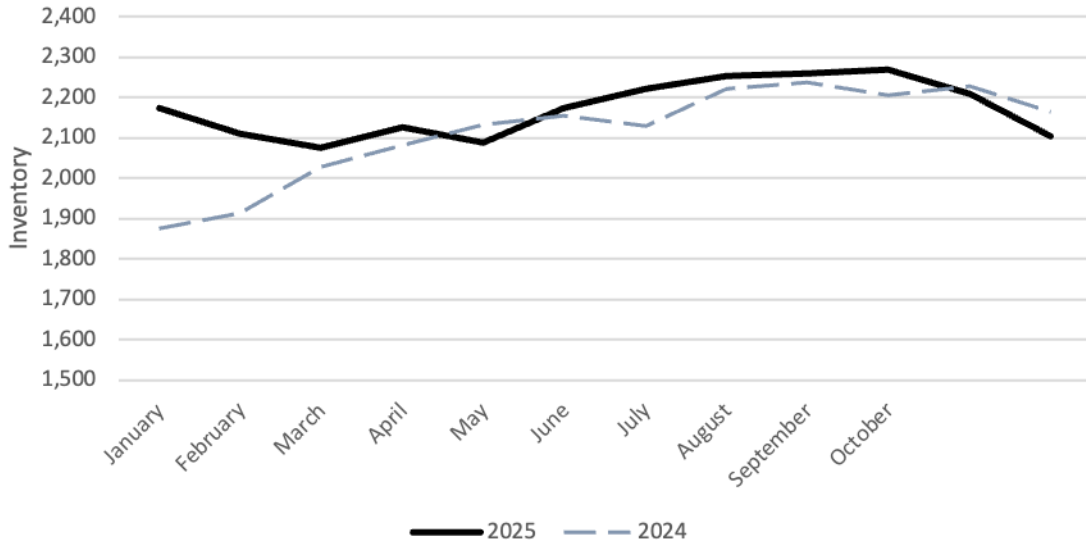
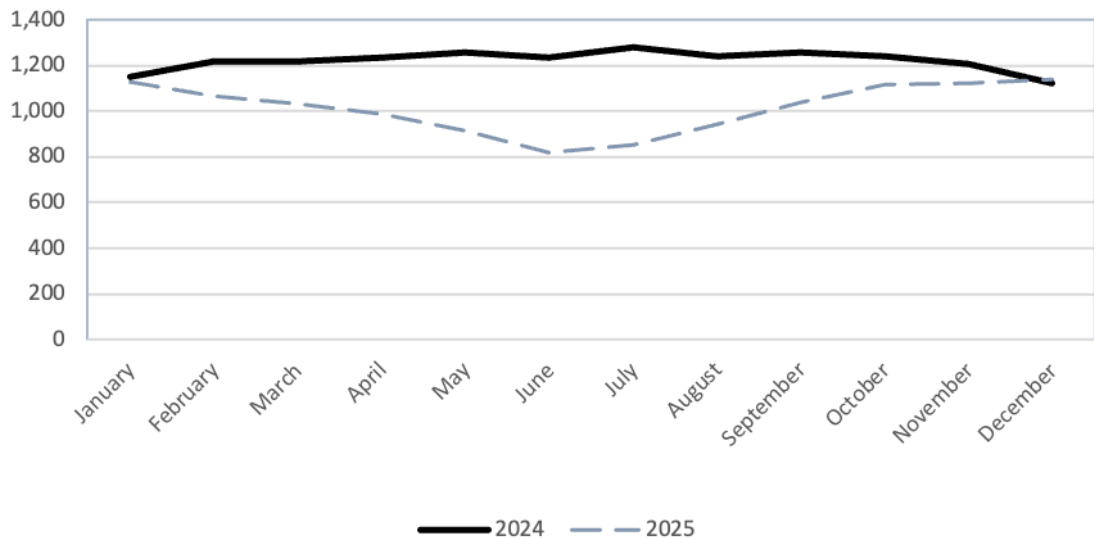


Figure 11. Southwest Louisiana Association of Realtors - Inventory of Homes for Sale by Month and Year-Over-Year Comparison



4. PORTS

The following figures provide a snapshot of short-term export, import, and vessel arrival activity across Louisiana's five deep-water ports, reflecting the region's current economic conditions, trade patterns, industrial strengths, and supply chain dynamics.

Source: portwatch.imf.org

Figure 12. Baton Rouge Port Export Volume, by Tonnage

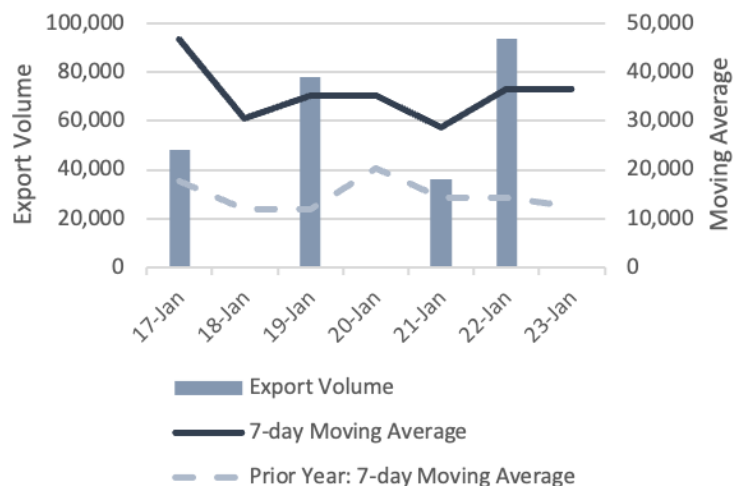


Figure 13. New Orleans Port Export Volume, by Tonnage

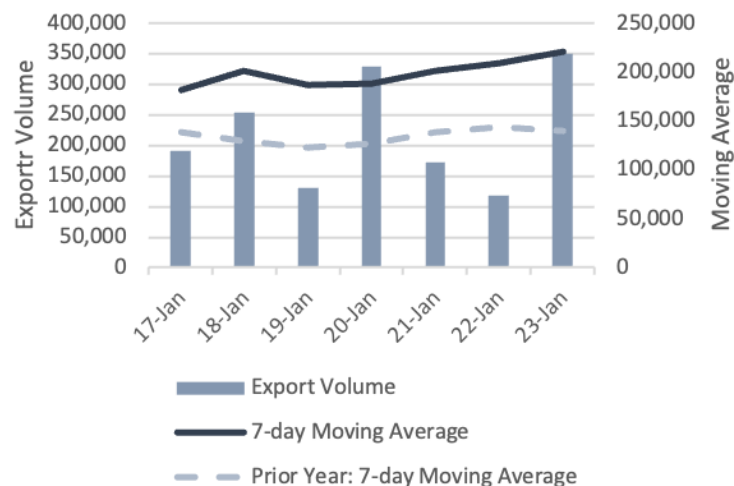


Figure 14. South Louisiana Port Export Volume, by Tonnage

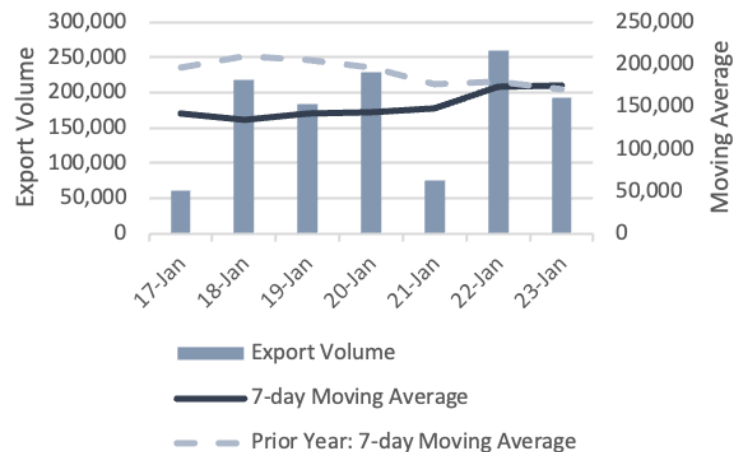


Figure 15. Lake Charles Port Export Volume, by Tonnage

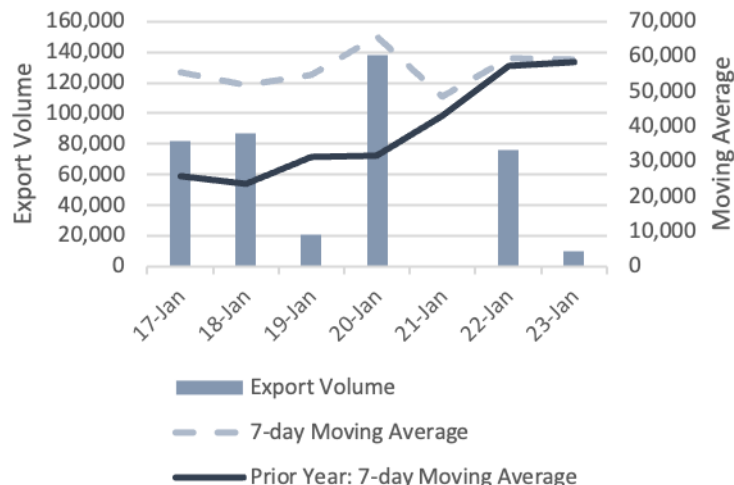


Figure 16. Plaquemines Port Export Volume, by Tonnage

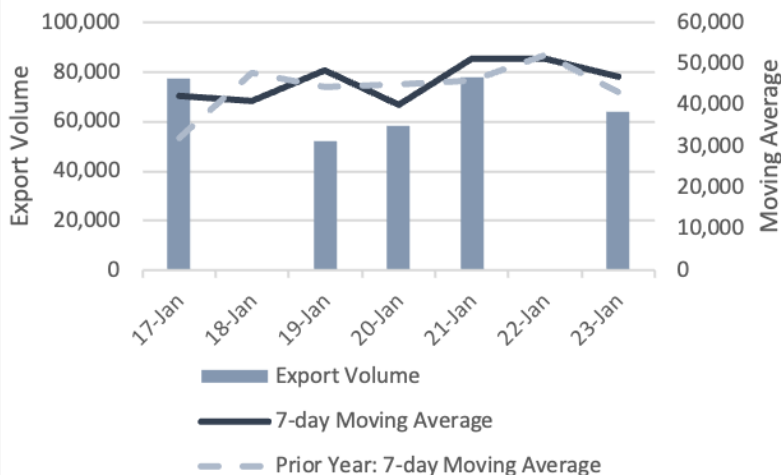


Figure 17. Baton Rouge Port Import Volume, by Tonnage

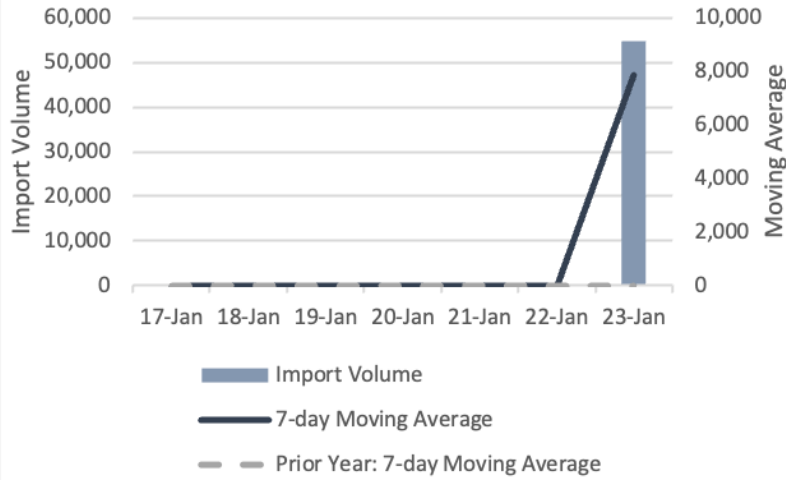


Figure 18. New Orleans Port Import Volume, by Tonnage

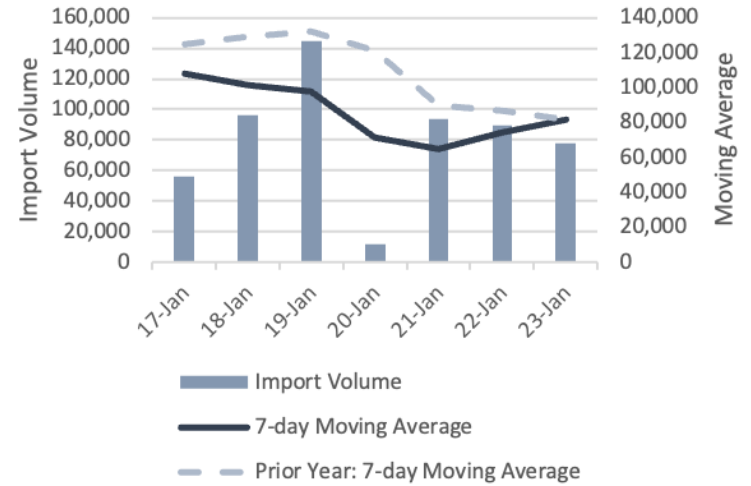


Figure 19. South Louisiana Port Import Volume, by Tonnage

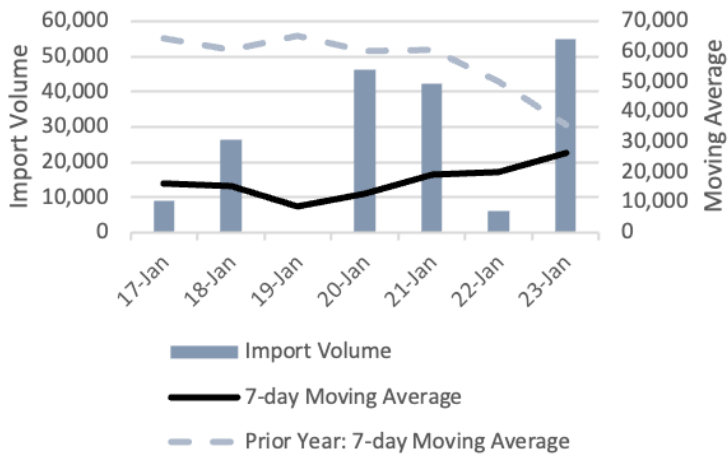


Figure 20. Lake Charles Port Import Volume, by Tonnage

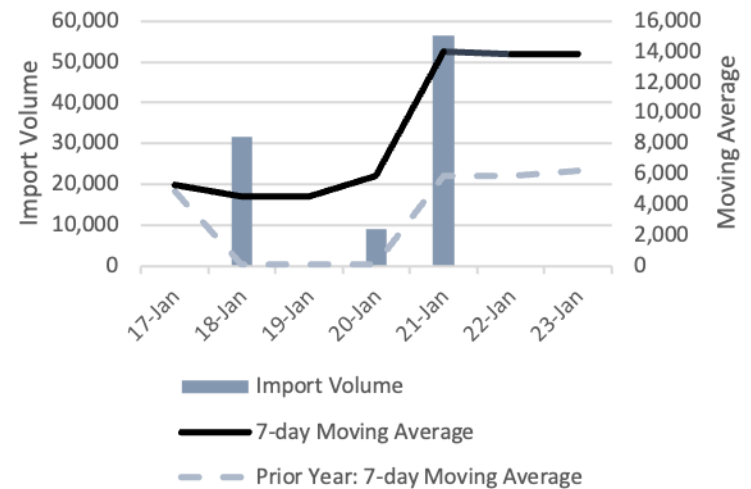


Figure 21. Plaquemines Port Import Volume, by Tonnage

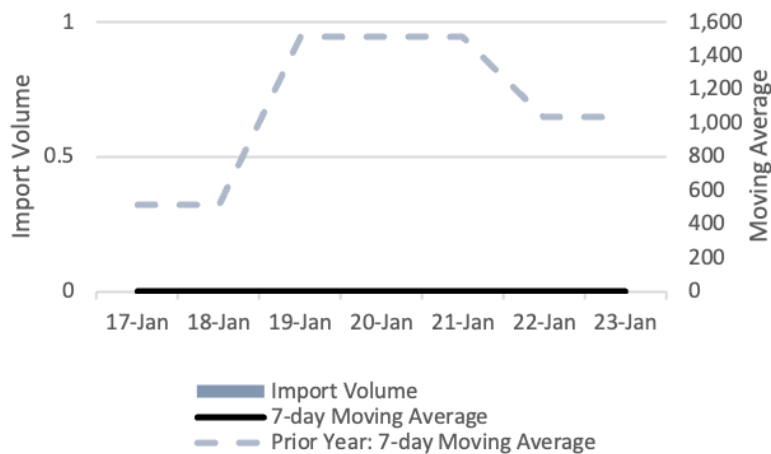


Figure 22. Baton Rouge Port Arrivals, by Type of Vessel

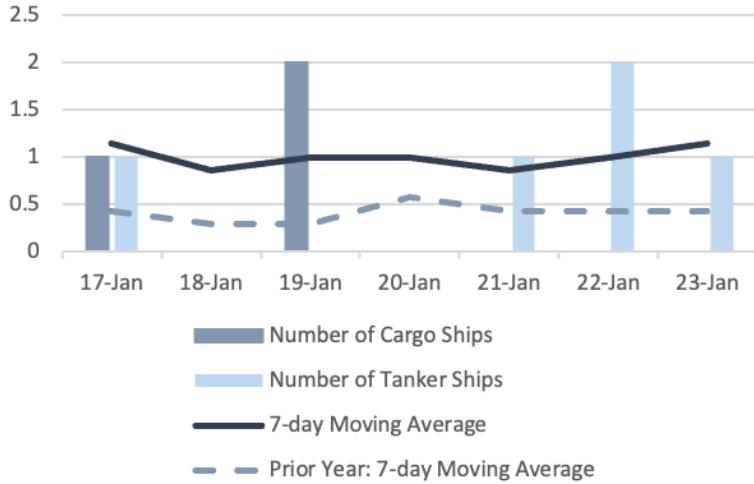


Figure 23. New Orleans Port Arrivals, by Type of Vessel

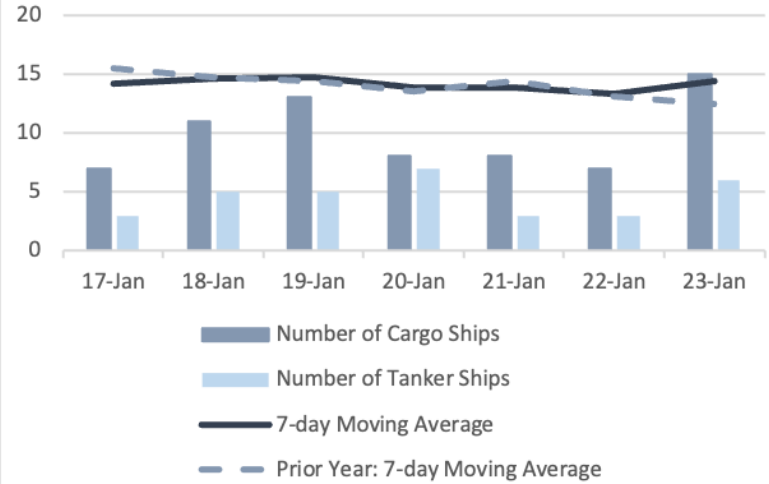


Figure 24. South Louisiana Port Arrivals, by Type of Vessel

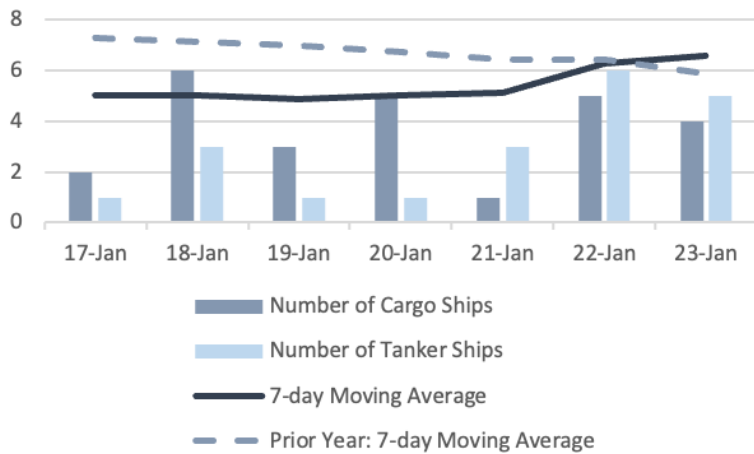


Figure 25. Lake Charles Port Arrivals, by Type of Vessel

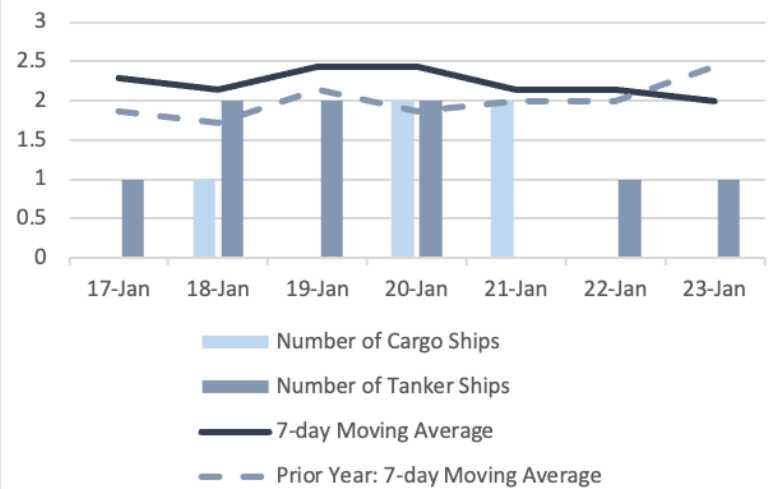
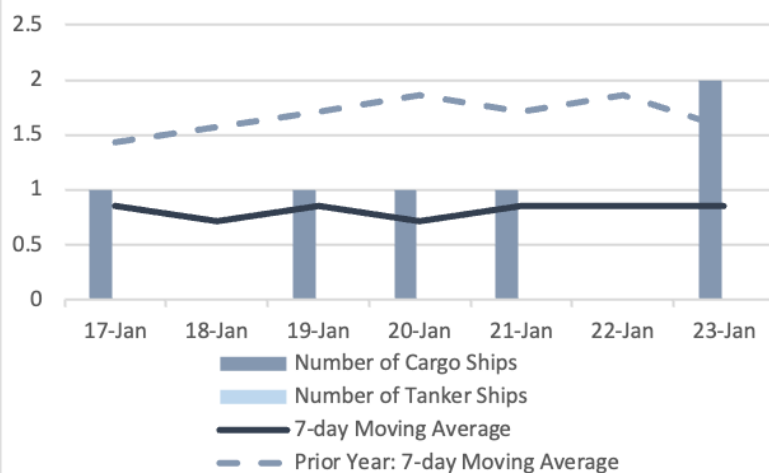


Figure 26. Plaquemines Port Arrivals, by Type of Vessel



5. REAL GDP FOR LOUISIANA & THE SOUTH

The following table presents data for Louisiana's gross domestic product, personal income, and personal income per capita for the third quarter of 2025.

Source: [bea.gov](https://www.bea.gov)

Table 5. Louisiana Real Gross Domestic Product and Personal Income, Quarterly					
Component	2025:Q3	2025:Q2	2024:Q3	Change	
				QoQ	YoY
Real GDP (millions of dollars)	\$65,411.2	\$64,849.7	\$64,548.7	0.9%	1.3%
Personal Income (millions of dollars)	\$74,050.6	\$74,160.6	\$71,441.3	-0.1%	3.7%
Per Capita Personal Income ¹ (dollars)	\$16,125.0	\$16,146.0	\$15,536.8	-0.1%	3.8%
¹ Per capita personal income is total personal income divided by total quarterly population estimates. Note: Data are seasonally adjusted. GDP is in millions of chained (2017) dollars at quarterly rates; Personal income and personal income per capita are in curent dollars.					

The following table presents state-level quarterly real GDP per capita for Louisiana and other peer states in the south. This measure provides a rough indicator of the level of economic activity per person across states, allowing comparisons after adjusting for inflation.

Source: [bea.gov](https://www.bea.gov)

Table 6. Real Gross Domestic Product Per Capita by State, Quarterly					
Component	2025:Q3	2025:Q2	2024:Q3	Change	
				QoQ	YoY
Alabama	\$50,425	\$49,854	\$49,976	1.1%	0.9%
Arkansas	\$48,820	\$48,132	\$48,002	1.4%	1.7%
Florida	\$59,014	\$58,506	\$58,211	0.9%	1.4%
Georgia	\$63,448	\$62,692	\$62,602	1.2%	1.4%
Kentucky	\$51,068	\$50,438	\$50,575	1.2%	1.0%
Louisiana	\$57,165	\$56,674	\$56,157	0.9%	1.8%
Mississippi	\$42,934	\$42,431	\$42,221	1.2%	1.7%
Missouri	\$57,540	\$56,913	\$56,786	1.1%	1.3%
North Carolina	\$61,698	\$60,870	\$60,470	1.4%	2.0%
Oklahoma	\$52,150	\$51,572	\$51,626	1.1%	1.0%
South Carolina	\$52,097	\$51,558	\$50,924	1.0%	2.3%
Tennessee	\$61,969	\$61,249	\$61,331	1.2%	1.0%
Texas	\$72,434	\$71,695	\$71,599	1.0%	1.2%

February

2026

Economic Calendar

The *Louisiana Economic Vitals* economic calendar provides insights into upcoming events and data releases. It includes information on national economic indicators, such as GDP, employment figures, inflation rates, and central bank meetings. Links to source are included.

Sunday	Monday	Tuesday	Wednesday	Thursday	Friday	Saturday
1	2	3	4	5	6	7
		JOLTS [Dec]	Metro Area Employment [Dec]	Pending Home Sales [Jan]	Employment [Jan] U. of Michigan Sentiment [Feb]	
8	9	10	11	12	13	14
		Retail Sales [Dec] U.S. Import & Export Price Indexes [Dec] Manufacturing & Trade Inventory & Sales [Nov] NFIB Small Business Optimism Index [Jan]	Real Earnings [Jan] CPI [Jan] Federal Budget [Jan]	Existing Home Sales [Jan]		
15	16	17	18	19	20	21
		NAHB HMI [Feb]	New Residential Construction [Nov & Dec] Durable Goods [Dec] Industrial Production [Jan]	State Jolts [Dec] International Trade [Dec]	New Residential Sales [Nov & Dec]	
22	23	24	25	26	27	28
		Consumer Confidence [Feb]		Total Vehicle Sales [Jan]		