

# Louisiana Economic Vitals

## Friday, February 6, 2026



# PREFACE

*Louisiana Economic Vitals* is a weekly report prepared by LED's State Economic Competitiveness (SEC) team. This report provides readers with data from federal and state governmental entities, as well as other credible third-party sources. All data has been independently analyzed and summarized to ensure clarity, brevity, and practical utilization.

## LOUISIANA ECONOMIC DEVELOPMENT FEBRUARY 2026 ANNOUNCEMENTS:

[Tulane-inspired VC fund reaches fundraising milestone; Shreveport org to support energy startups](#)  
February 3<sup>rd</sup>, 2026

[The Shaw Group to Double Workforce in Livingston Parish to Support Growing Demand](#)  
February 3<sup>rd</sup>, 2026

### Direct questions and comments to:

Dr. Christopher Coombs, Economist, Economic Competitiveness

E: [Christopher.Coombs@la.gov](mailto:Christopher.Coombs@la.gov) T: 225.342.5410



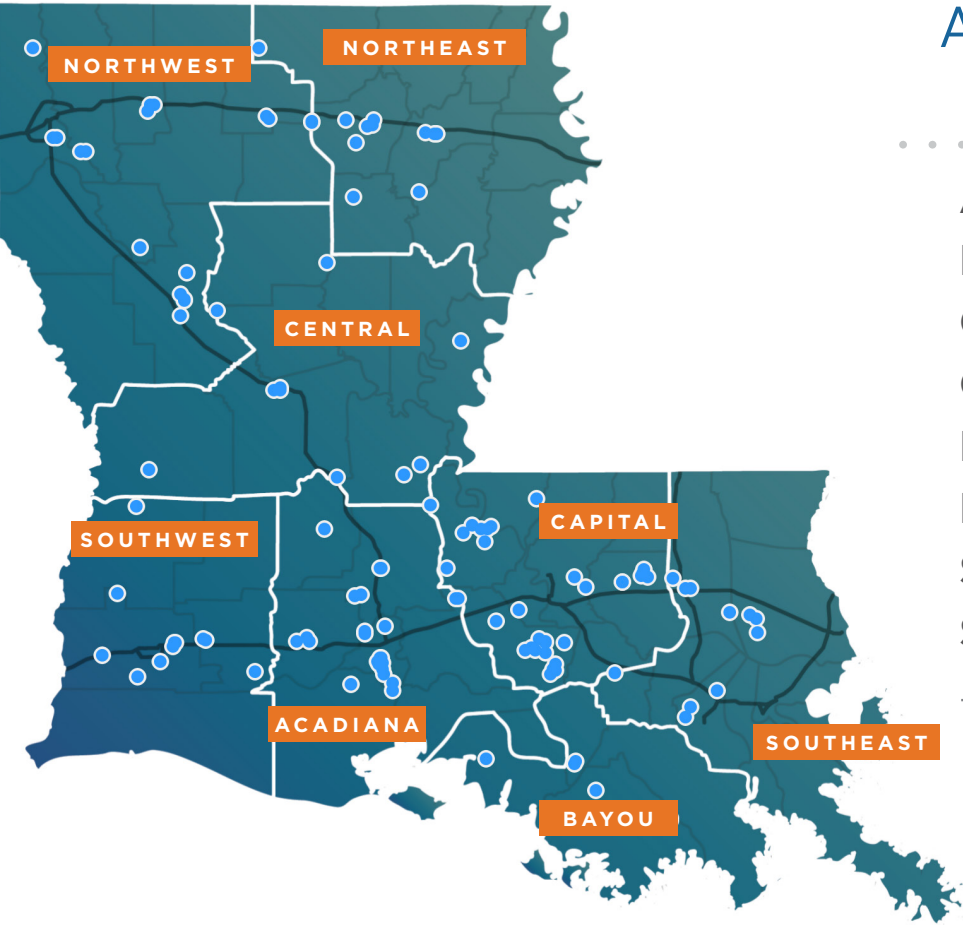
# LED PROJECT PIPELINE

Since Governor Landry took office in January 2024, LED has announced 79 projects representing over \$76.03 billion USD in new investment and more than 11,970 direct new jobs across Louisiana.

As of February 5, 2026, LED is actively tracking and involved in 190 distinct projects with a combined value exceeding \$285.9 billion and the potential to create more than 50,990 direct new jobs.

## CERTIFIED SITE PROGRAM

Since the launch of its Certified Sites Program, LED has certified 164 industrial sites, with all or portions of 36 sites advancing into active commerce. At full build-out, these projects represent more than \$34.5 billion in capital investment, over 6,350 direct new jobs, and more than \$407 million in total annual wages statewide. Currently, there are 125 actively marketed certified sites across every region of Louisiana.



### Active Certified Sites by Region

|                     |    |
|---------------------|----|
| Acadiana . . . . .  | 23 |
| Bayou . . . . .     | 6  |
| Capital . . . . .   | 25 |
| Central . . . . .   | 9  |
| Northeast . . . . . | 13 |
| Northwest . . . . . | 17 |
| Southeast . . . . . | 18 |
| Southwest . . . . . | 14 |

TOTAL 125

# 1. LABOR MARKET ACTIVITY

The Job Openings and Labor Turnover Survey (JOLTS) program of the Bureau of Labor Statistics (BLS) publishes monthly estimates of job openings, hires, and separations for the U.S. and each state at the total nonfarm industry level. The survey data is designed to illuminate if there is a churn of workers moving to better opportunities, a dynamism that typically drives wage growth and economic momentum.

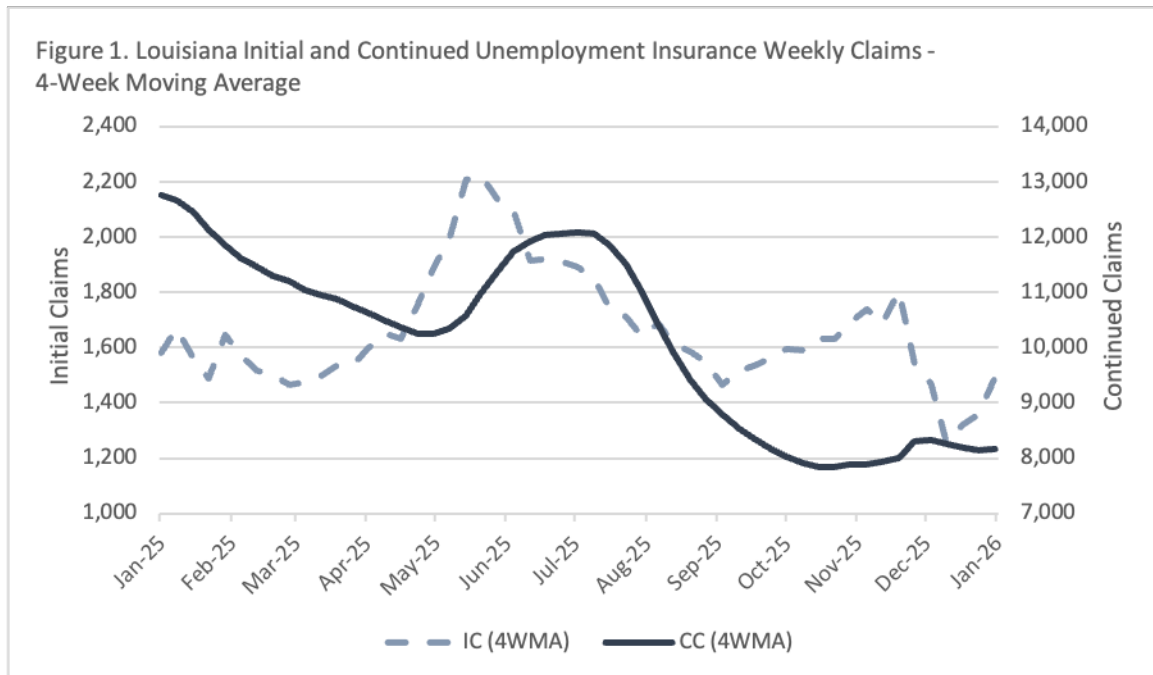
Source: [bls.gov](https://www.bls.gov)

| Table 1. Louisiana Job Openings and Labor Turnover, Total Nonfarm (in Thousands) |        |        |        |        |        |
|--|--------|--------|--------|--------|--------|
| Category   | Nov-25 | Oct-25 | Nov-24 | Change |        |
|  |        |        |        | MoM    | YoY    |
| Job Openings   | 111    | 122    | 124    | -9.0%  | -10.5% |
| Hires  | 71     | 74     | 84     | -4.1%  | -15.5% |
| Quits  | 50     | 44     | 45     | 13.6%  | 11.1%  |
| Layoffs and Discharges   | 20     | 25     | 24     | -20.0% | -16.7% |
| Note: November 2025 data are preliminary; Data are seasonally adjusted           |        |        |        |        |        |

| Table 2. U.S. Job Openings and Labor Turnover, Total Nonfarm (In Thousands) |        |        |        |        |        |
|---|--------|--------|--------|--------|--------|
| Category  | Dec-25 | Nov-25 | Dec-24 | Change |        |
|   |        |        |        | MoM    | YoY    |
| Job Openings  | 6,542  | 6,928  | 7,508  | -5.6%  | -12.9% |
| Hires   | 5,293  | 5,121  | 5,374  | 3.4%   | -1.5%  |
| Quits   | 3,204  | 3,193  | 3,095  | 0.3%   | 3.5%   |
| Layoffs and Discharges  | 1,762  | 1,701  | 1,669  | 3.6%   | 5.6%   |
| Note: December 2025 data are preliminary; Data are seasonally adjusted      |        |        |        |        |        |

Initial claims represent people in Louisiana who are newly filing for unemployment benefits and are a leading indicator of labor market weakness. Continued claims represent people in the state who are still receiving benefits and they reflect the persistence of unemployment. If both initial and continued claims are rising together, it suggests new layoffs and difficulty finding new employment. If initial claims rise but continued claims remain stable or fall, it might indicate a short-term shock rather than a potential recession. Declining continued claims, even if initial claims stay elevated, could signal that people are getting back to work quickly, and if continued claims rise while initial claims fall, that could signal a slowing rate of new layoffs, but ongoing unemployment problems.

Source: [laworks.net](http://laworks.net)



## 2. COMMODITIES

The following tables provide data on the weekly prices of energy and agricultural commodities, reflecting the broader economic performance of these sectors.

Source: [eia.gov](https://www.eia.gov)

| Table 3. Energy Commodities, Weekly |         |         |         |        |        |
|-------------------------------------|---------|---------|---------|--------|--------|
| Commodity                           | 1/30/26 | 1/23/26 | 1/31/25 | Change |        |
|                                     |         |         |         | WoW    | YoY    |
| Brent Crude Oil Price               | \$70.43 | \$66.99 | \$77.37 | 5.1%   | -9.0%  |
| WTI Crude Oil Price                 | \$62.90 | \$60.16 | \$73.31 | 4.6%   | -14.2% |
| Henry Hub Natural Gas Spot Price    | \$13.80 | \$12.02 | \$3.31  | 14.8%  | 316.9% |
| U.S. Regular Conventional Gas Price | \$2.75  | \$2.70  | \$3.00  | 1.9%   | -8.3%  |

| Table 4. Agricultural Commodities, Daily Period of February 5, 2026 |              |             |                     |        |        |         |        |
|---|--------------|-------------|---------------------|--------|--------|---------|--------|
| Commodity   | Listed Price | Dollar (\$) | Unit of Measurement | Change |        |         |        |
|   |              |             |                     | Daily  | Weekly | Monthly | YoY    |
| Soybeans  | \$1,107.05   | \$11.07     | \$/Bu               | 1.3%   | 3.2%   | 6.2%    | 4.4%   |
| Wheat   | \$532.78     | \$5.33      | \$/Bu               | 1.2%   | -1.6%  | 4.4%    | -9.4%  |
| Lumber  | \$584.56     | \$5.85      | \$/MBF              | -0.8%  | -2.6%  | 9.9%    | -0.2%  |
| Palm Oil  | \$4,208.00   | \$42.08     | \$/MT               | -0.3%  | -2.6%  | 5.4%    | -4.5%  |
| Sugar (No. 11)  | \$14.26      | \$0.14      | \$/Lb               | -1.0%  | -3.0%  | -3.4%   | -27.0% |
| Coffee  | \$303.25     | \$3.03      | \$/Lb               | -2.2%  | -12.1% | -18.8%  | -24.7% |
| Corn  | \$431.74     | \$4.32      | \$/Bu               | 0.6%   | 0.2%   | -2.8%   | -12.8% |
| Rice  | \$11.17      | \$0.11      | \$/CWT              | 0.8%   | 0.5%   | 11.0%   | -18.1% |
| Orange Juice  | \$159.65     | \$1.60      | \$/Lb               | -5.9%  | -29.4% | -23.4%  | -63.5% |

### 3. LOUISIANA REAL ESTATE

Louisiana Realtors® produces monthly reports on local market updates for the state and its regions. The following figures illustrate regional new listings for single-family homes by month with a year-over-year comparison for 2024-2025. A list of parishes served by each regional entity is also provided.

Source: [louisiana.stats.showingtime.com](https://louisiana.stats.showingtime.com)

**Bayou Board of REALTORS®** - Assumption, Lafourche, St. Mary, Terrebonne;

**Greater Central Louisiana Realtors® Association** - Allen, Avoyelles, Catahoula, Evangeline, Grant, LaSalle, Natchitoches, Rapides, Winn;

**Greater Baton Rouge Association of Realtors®** - Ascension, East Baton Rouge, East Feliciana, Iberville, Livingston, Pointe Coupee, St. Helena, West Baton Rouge, West Feliciana;

**Greater Fort Polk Area Realtors®** - Beauregard, Sabine, Vernon;

**New Orleans Metropolitan Association of Realtors®** - Jefferson, Orleans, Plaquemines, St. Bernard, St. Charles, St. James, St. John;

**Northeast Realtors® of Louisiana** -Caldwell, Concordia, East Carroll, Franklin, Jackson, Lincoln, Madison, Morehouse, Ouachita, Richland, Tensas, Union, West Carroll;

**Northwest Louisiana Association of Realtors®** - Bienville, Bossier, Caddo, Claiborne, DeSoto, Red River, Webster;

**Realtor® Association of Acadiana** - Acadia, Iberia, Lafayette, St. Landry, St. Martin, Vermilion;

**Southwest Louisiana Association of Realtors®** - Calcasieu, Cameron, Jefferson Davis;

and, although not included

**Northshore Area Board of Realtors®** - St. Tammany, Tangipahoa, Washington

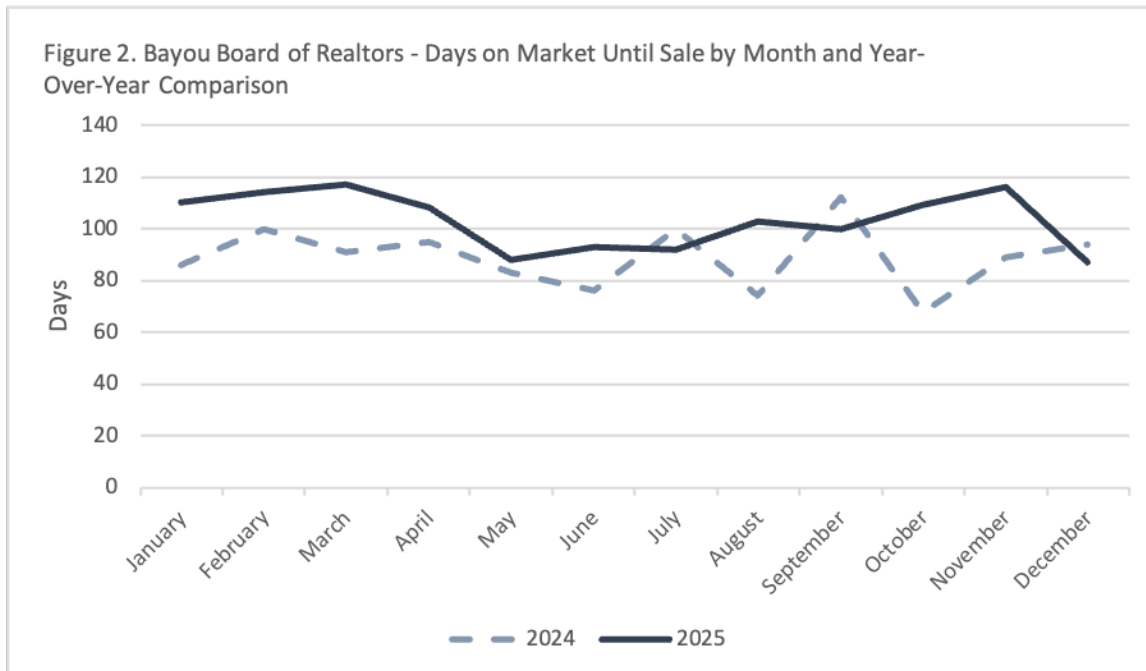


Figure 3. Greater Baton Rouge Association of Realtors - Days on Market Until Sale  
by Month and Year-Over-Year Comparison

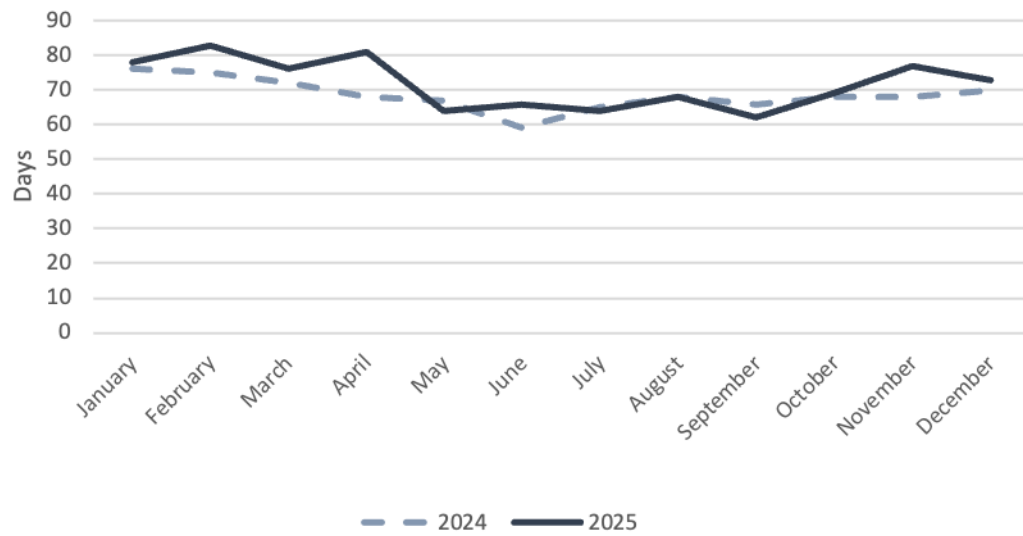


Figure 4. Greater Central Louisiana Realtors Association - Days on Market Until Sale  
by Month and Year-Over-Year Comparison

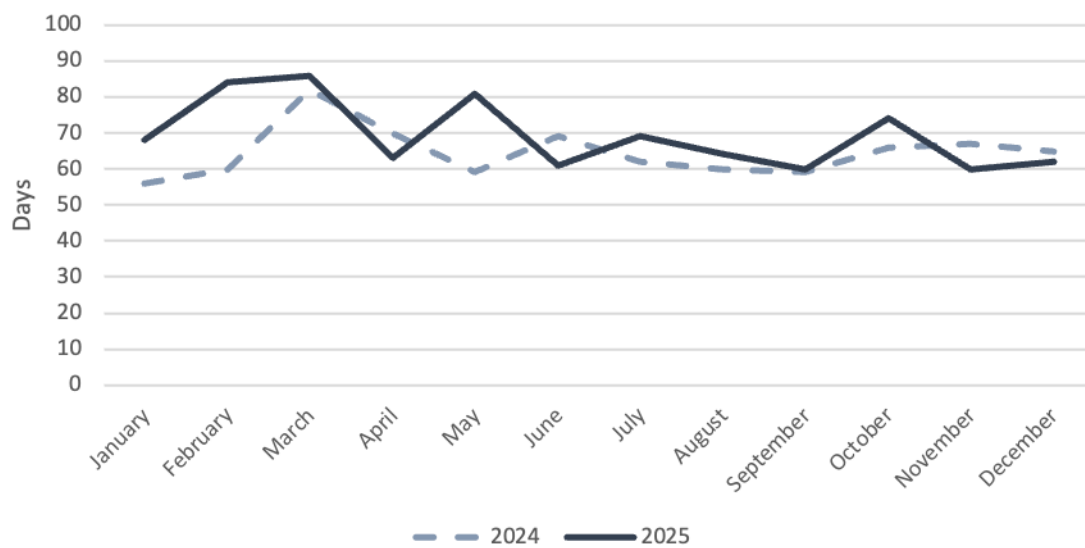




Figure 5. Greater Fort Polk Area Realtors - Days on Market Until Sale by Month and Year-Over-Year Comparison

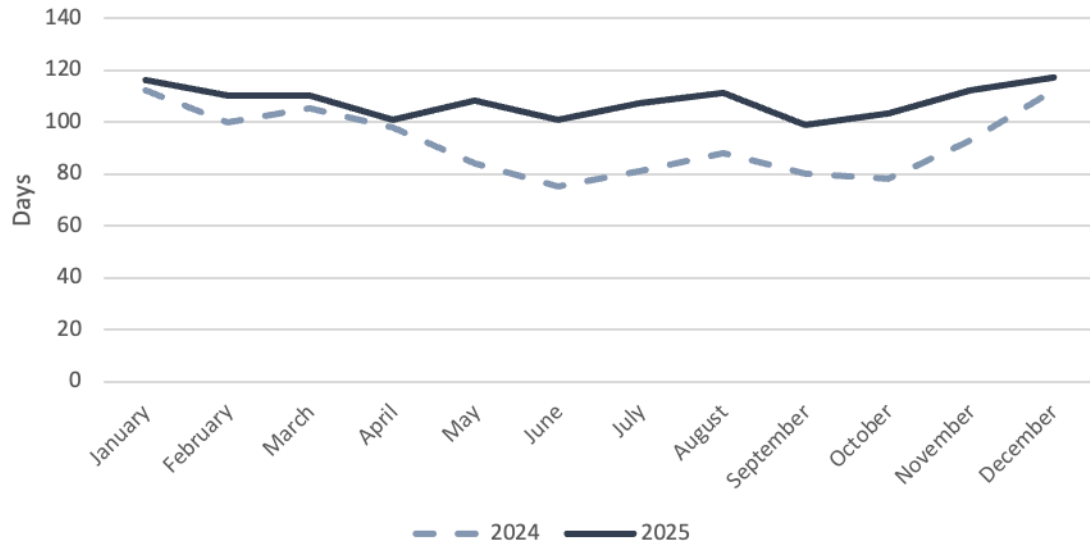


Figure 6. New Orleans Metropolitan Association of Realtors - Days on Market Until Sale by Month and Year-Over-Year Comparison

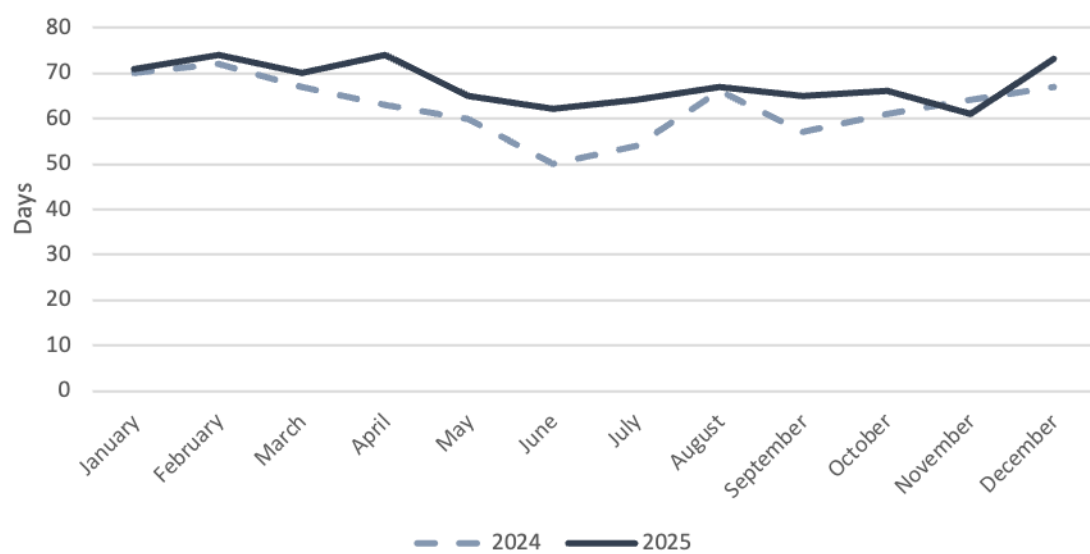


Figure 7. Northeast Realtors of Louisiana - Days on Market Until Sale by Month and Year-Over-Year Comparison

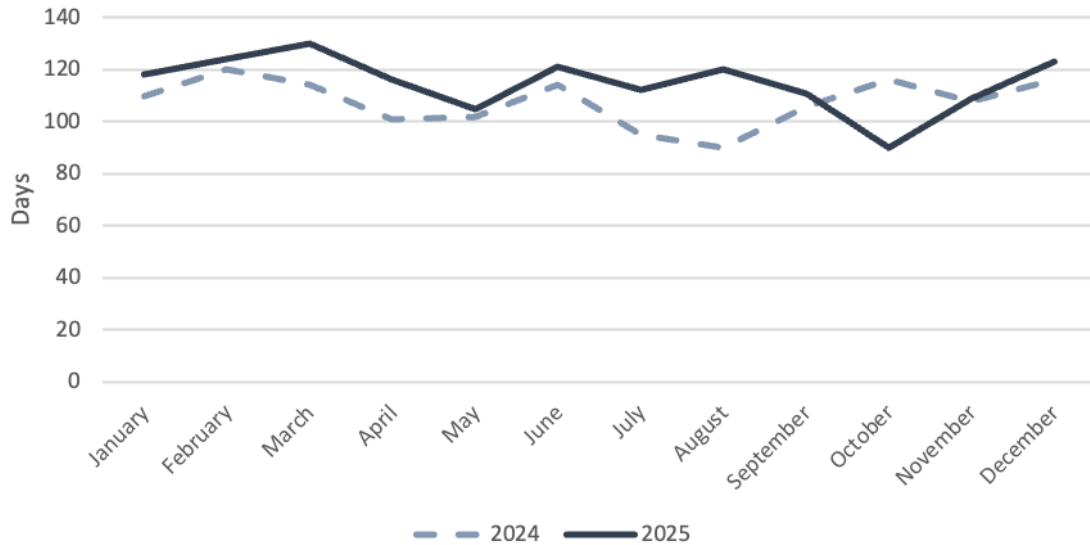


Figure 8. Northwest Louisiana Association of Realtors - Days on Market Until Sale by Month and Year-Over-Year Comparison

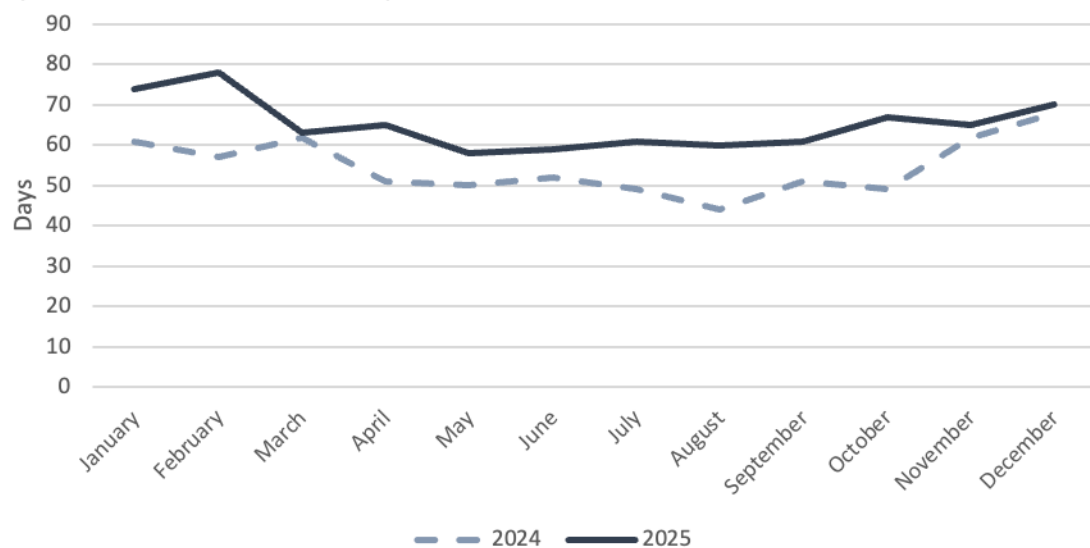


Figure 9. Realtor Association of Acadiana - Days on Market Until Sale by Month and Year-Over-Year Comparison

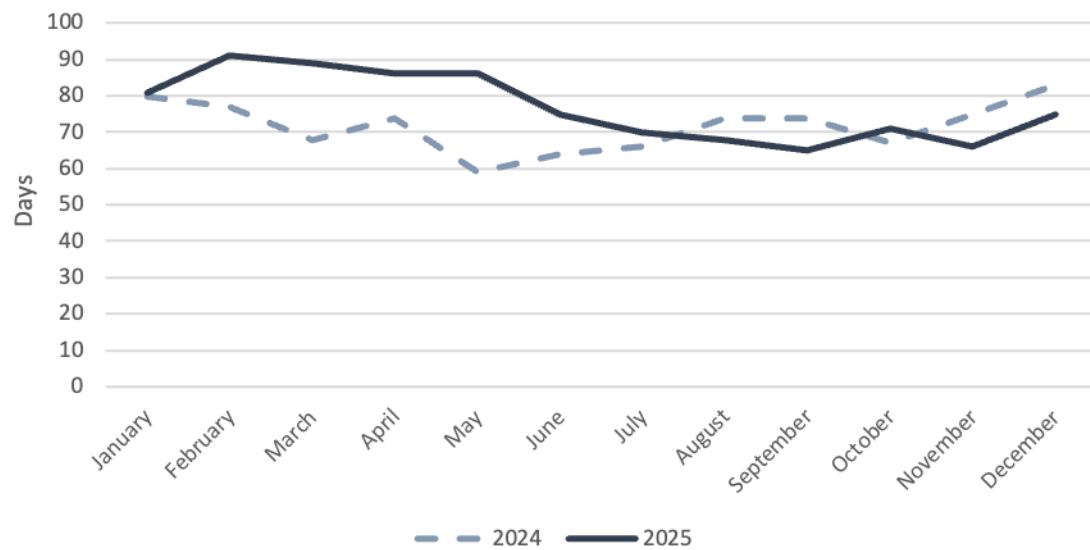
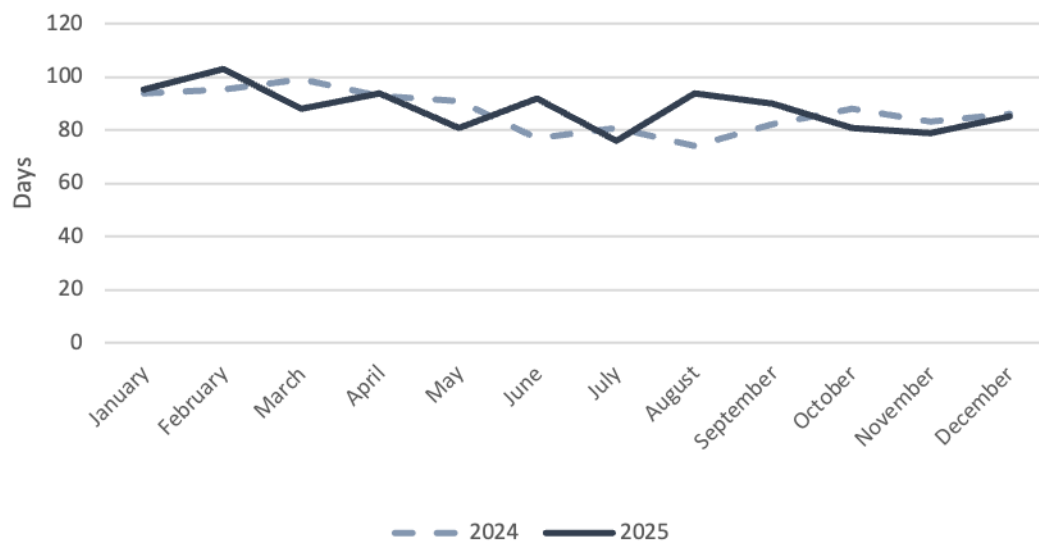


Figure 10. Southwest Louisiana Association of Realtors - Days on Market Until Sale by Month and Year-Over-Year Comparison



## 4. PORTS

The following figures provide a snapshot of short-term export, import, and vessel arrival activity across Louisiana's five deep-water ports, reflecting the region's current economic conditions, trade patterns, industrial strengths, and supply chain dynamics.

Source: [portwatch.imf.org](https://portwatch.imf.org)

Figure 11. Baton Rouge Port Export Volume, by Tonnage

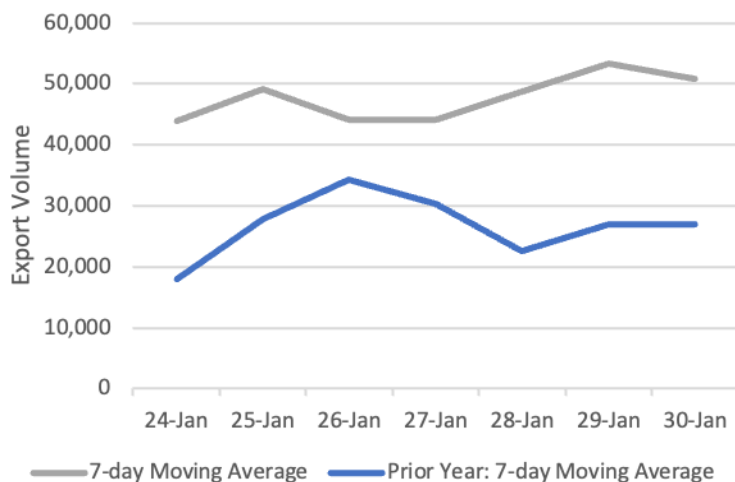


Figure 12. New Orleans Port Export Volume, by Tonnage

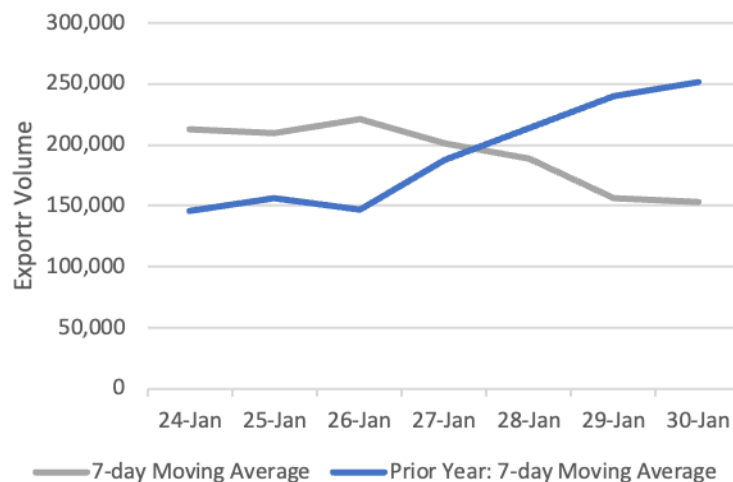


Figure 13. South Louisiana Port Export Volume, by Tonnage

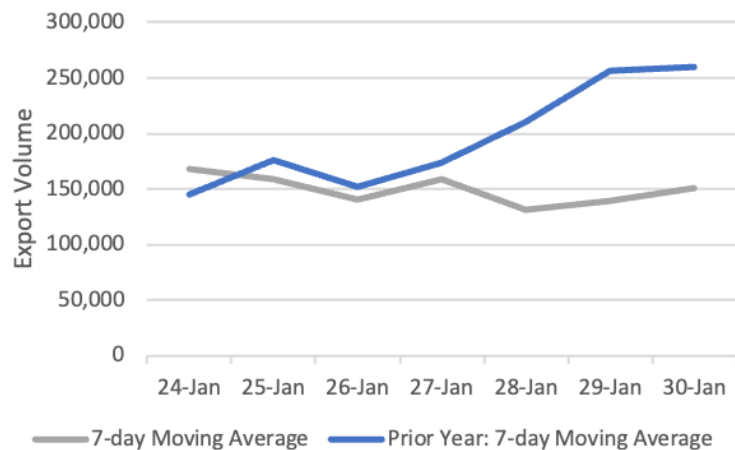


Figure 14. Lake Charles Port Export Volume, by Tonnage

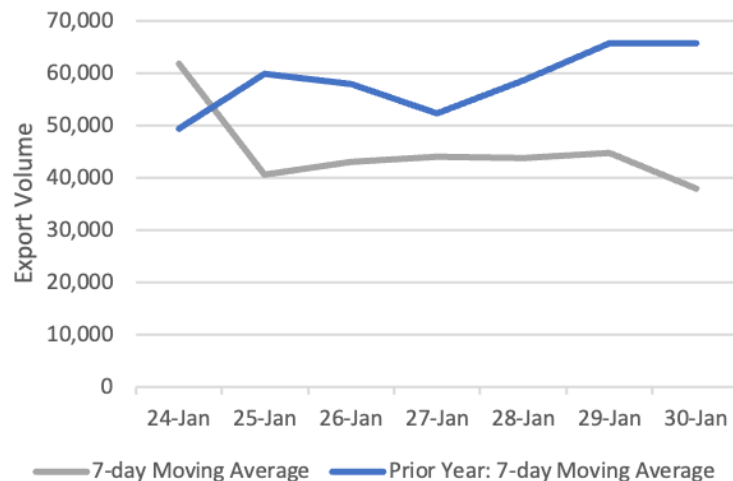


Figure 15. Plaquemines Port Export Volume, by Tonnage

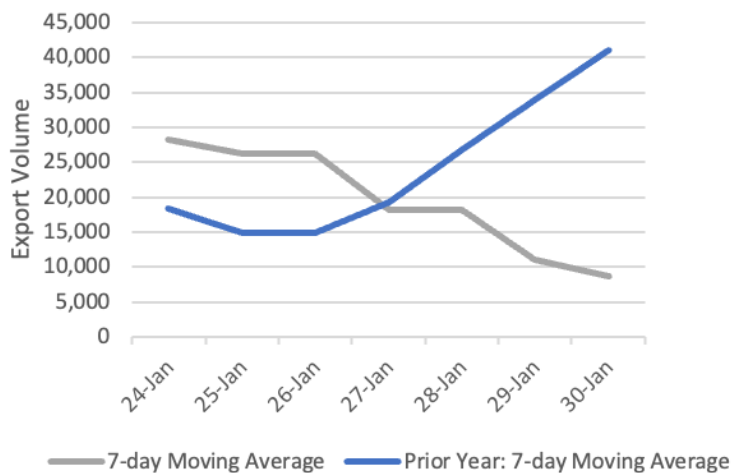


Figure 16. Baton Rouge Port Import Volume, by Tonnage

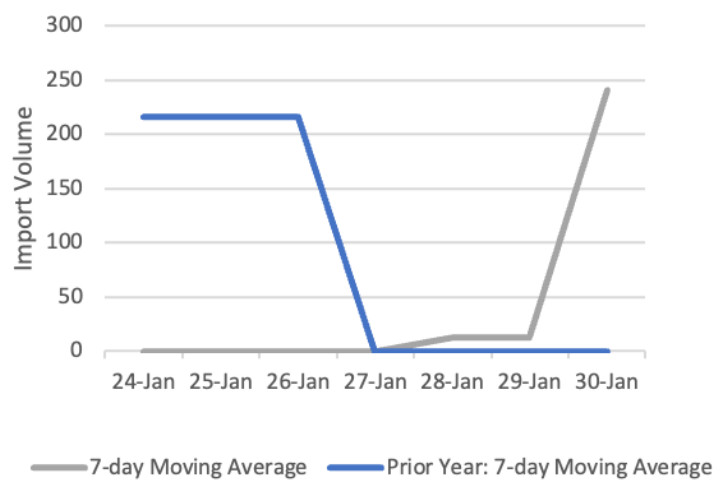


Figure 17. New Orleans Port Import Volume, by Tonnage

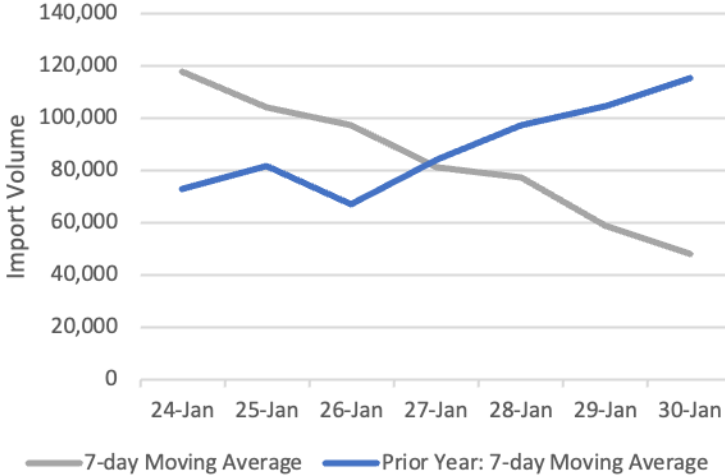


Figure 18. South Louisiana Port Import Volume, by Tonnage

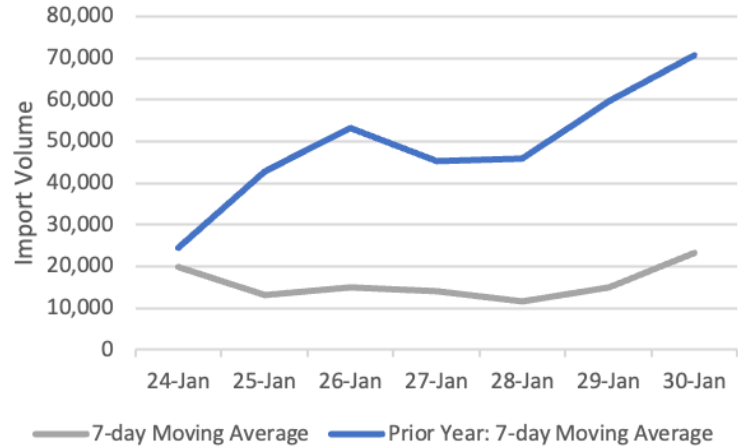


Figure 19. Lake Charles Port Import Volume, by Tonnage

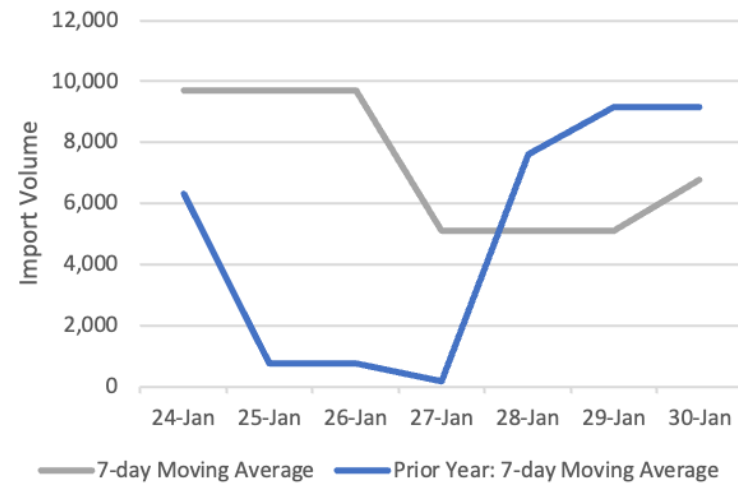


Figure 20. Plaquemines Port Import Volume, by Tonnage

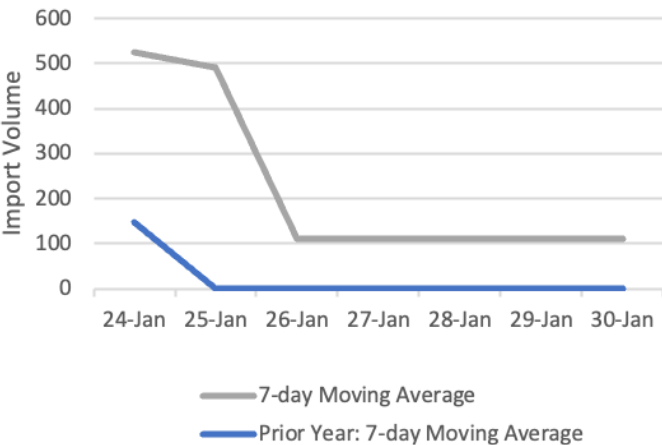




Figure 21. Baton Rouge Port Arrivals, by Type of Vessel

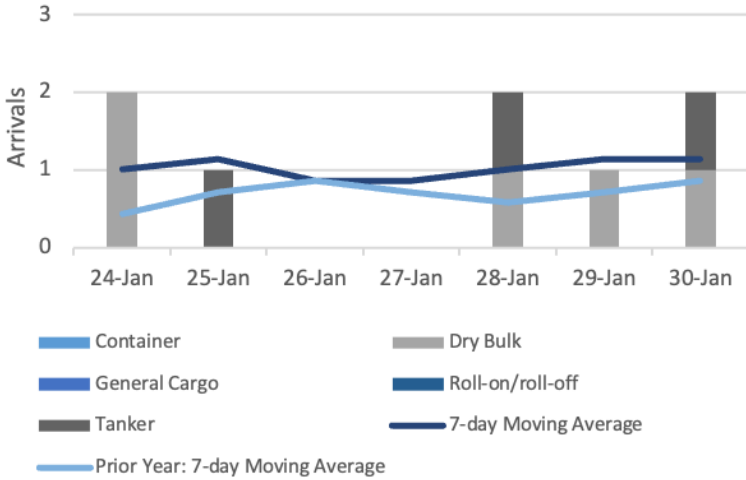


Figure 22. New Orleans Port Arrivals, by Type of Vessel

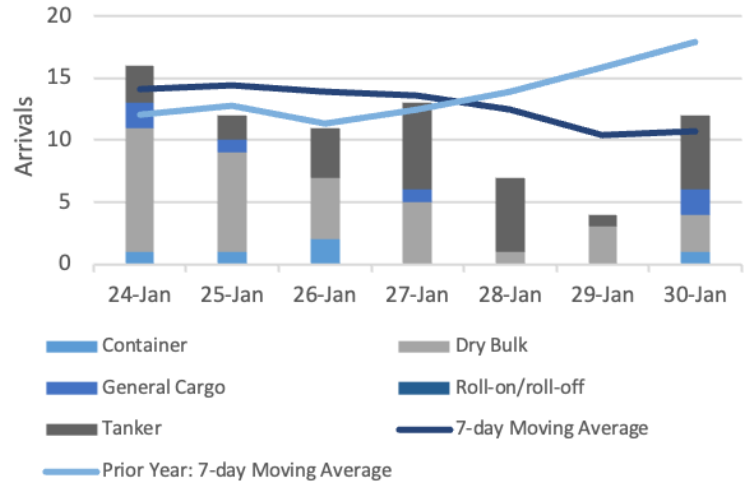


Figure 23. South Louisiana Port Arrivals, by Type of Vessel

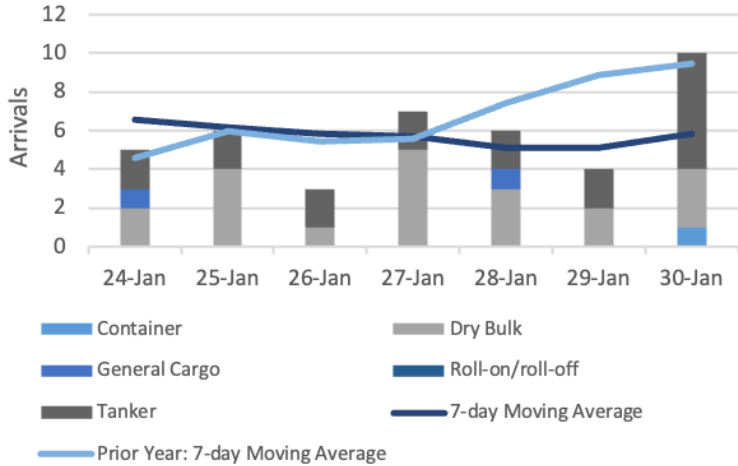


Figure 24. Lake Charles Port Arrivals, by Type of Vessel

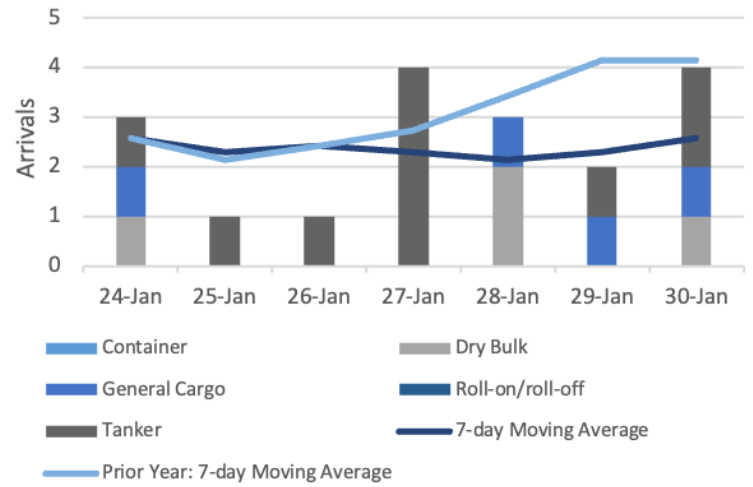
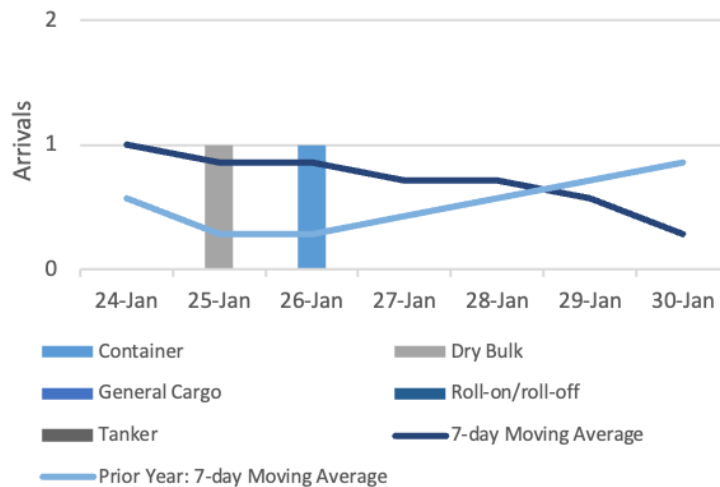


Figure 25. Plaquemines Port Arrivals, by Type of Vessel



# February\*

2026

## Economic Calendar

The *Louisiana Economic Vitals* economic calendar provides insights into upcoming events and data releases. It includes information on national economic indicators, such as GDP, employment figures, inflation rates, and central bank meetings. Links to source are included.

\*Revised calendar reflects updated release dates following appropriations lapse.

| Sunday | Monday   | Tuesday   | Wednesday   | Thursday   | Friday   | Saturday |
|--------|--|---|---|--|--|----------|
| 1      | 2  | 3   | 4   | 5<br><a href="#">JOLTS</a><br>[Dec]                        | 6<br><a href="#">Metro Area Employment</a><br>[Dec]<br><a href="#">U. of Michigan Sentiment</a><br>[Feb] | 7        |
| 8      | 9<br><a href="#">Retail Sales</a><br>[Dec]<br><a href="#">U.S. Import &amp; Export Price Indexes</a><br>[Dec]<br><a href="#">Manufacturing &amp; Trade Inventory &amp; Sales</a><br>[Nov]<br><a href="#">NFIB Small Business Optimism Index</a><br>[Jan] | 10  | 11<br><a href="#">Employment</a><br>[Jan]<br><a href="#">Federal Budget</a><br>[Jan]  | 12<br><a href="#">Existing Home Sales</a><br>[Jan]         | 13<br><a href="#">Real Earnings</a><br>[Jan]<br><a href="#">CPI</a><br>[Jan]                             | 14       |
| 15     | 16<br><a href="#">NAHB HMI</a><br>[Feb]  | 17<br><a href="#">New Residential Construction</a><br>[Nov & Dec]<br><a href="#">Durable Goods</a><br>[Dec]<br><a href="#">Industrial Production</a><br>[Jan] | 18<br><a href="#">State JOLTS</a><br>[Dec]<br><a href="#">International Trade</a><br>[Dec]<br><a href="#">Pending Home Sales</a><br>[Jan] | 19<br><a href="#">New Residential Sales</a><br>[Nov & Dec] | 20   | 21       |
| 22     | 23<br><a href="#">Consumer Confidence</a><br>[Feb]   | 24  | 25  | 26<br><a href="#">Total Vehicle Sales</a><br>[Jan]         | 27   | 28       |