

MORE IN



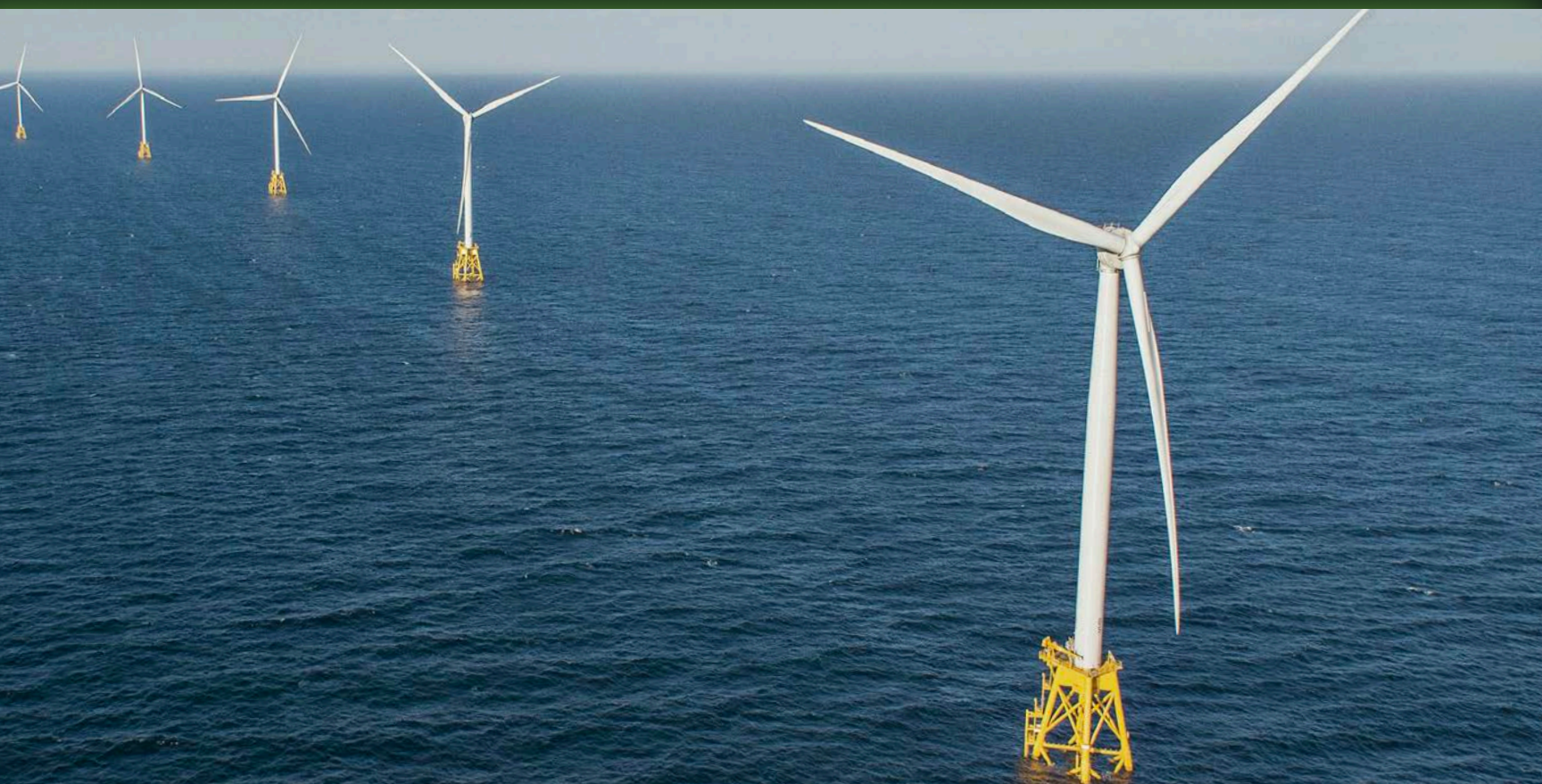
LOUISIANA

2022 ANNUAL REPORT



FUTURE FOCUSED

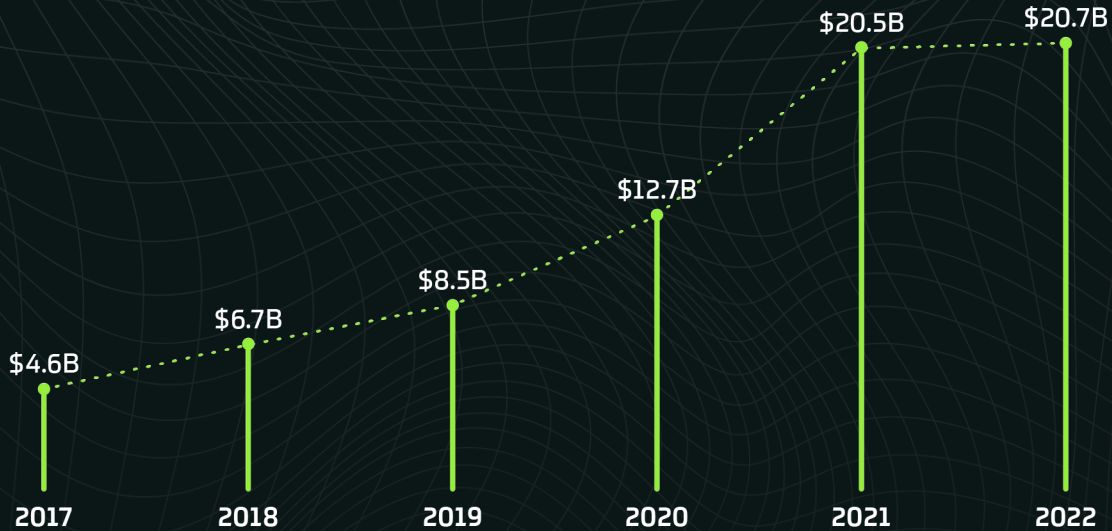
Louisiana leveraged its unique business advantages, sector diversity and support for innovation and climate action to expand its economy in 2022. It was the second consecutive year in which companies announced more than \$20 billion of new business development and expansion projects in the state, and the fifth consecutive year of capex growth. Nearly 20,000 new direct, indirect and retained jobs are expected to result from the 53 major economic development projects in 24 parishes across the state's eight economic regions. As important as the list of accomplishments for 2022 is the groundwork that has been laid for future growth: empowering small business prosperity; supporting research and technology; leaning into the global energy transition; reinvesting in critical infrastructure; and recruiting, training and sustaining Louisiana's most valuable resource – a skilled and versatile workforce.



2022 ECONOMIC DEVELOPMENT HIGHLIGHTS

\$20.7 BILLION

TOTAL CAPITAL INVESTMENT



9,035

NEW DIRECT AND INDIRECT JOBS

4

MEGA PROJECTS WITH INVESTMENTS OF MORE THAN \$1 BILLION

9,102

RETAINED JOBS

3rd

CONSECUTIVE YEAR OF OVER \$10 BILLION IN ECONOMIC INVESTMENT

30

PROJECTS WITH CAPITAL INVESTMENTS OF MORE THAN \$10 MILLION

2nd

CONSECUTIVE YEAR OF OVER \$20 BILLION IN ECONOMIC INVESTMENT

12

MAJOR PROJECTS WITH INVESTMENTS OF AT LEAST \$100 MILLION

24

PARISHES REPRESENTING ALL 8 ECONOMIC REGIONS OF THE STATE



“WE ENTER 2023 POISED FOR ADDITIONAL EXPANSION AND INNOVATION, POSITIONING OUR STATE FOR LONG-TERM SUCCESS IN A RAPIDLY CHANGING GLOBAL ECONOMY AT THE SAME TIME THAT MORE LOUISIANA RESIDENTS ARE ENTERING THE WORKFORCE THAN EVER BEFORE.”

The drumbeat of success echoed across Louisiana in 2022 as our state notched another year of impressive investment, job creation and economic diversification. We enter 2023 poised for additional expansion and innovation, positioning our state for long-term success in a rapidly changing global economy at the same time that more Louisiana residents are entering the workforce than ever before.

Distancing ourselves from the effects of the pandemic and natural disasters, we concluded 2022 with six straight months of record-breaking low unemployment. We have added about 228,000 jobs since the worst of the pandemic. LED announced more than 50 major projects across the state, representing over \$20 billion in new investment and more than 9,000 new jobs.

Our climate action plan – the first and only such plan in the Gulf South – has enhanced our strength as an energy state by balancing a long-term vision for emissions reduction with an aggressive response to current market demands. Ongoing investments in liquefied natural gas production and export capacity allowed Louisiana businesses to directly benefit from spiking global demand for LNG. And our unambiguous embrace of the emerging clean energy economy has attracted investment from both legacy energy companies and start-ups investing in emissions reduction technologies and offshore wind, solar and renewable fuels projects.

My administration’s efforts to revitalize Louisiana’s rural communities accelerated in 2022. Companies announced

20 new and expanding business projects representing \$1.5 billion in capital investment in rural areas over the past year. LED and my Office of Rural Development ramped up assistance for local communities seeking to access new federal funding designed to improve access to broadband, clean water, education, finance, healthcare, infrastructure, workforce development and agriculture.

Success in the future economy demands diversification, which our state continued to support in 2022 with important investments in emerging sectors such as tech, life sciences, aerospace and water management. Reinvesting in logistics assets such as the Avondale Global Gateway and the \$1.8 billion Louisiana International Terminal container facility at the Port of New Orleans will further secure Louisiana’s place as a U.S. leader in foreign direct investment.

The small business community remains the backbone of our state’s economy, which is why we have worked so hard to maximize the impact of the U.S. Treasury’s State Small Business Credit Initiative. The announcement in December that Louisiana entrepreneurs will receive up to \$113 million of support – with particular emphasis on traditionally underserved or disadvantaged businesses – will provide economic benefits for years to come.

Economic growth requires us to fix our gaze forward, not back. But the view from 2022 is clear: Louisiana’s economic foundation is strong, and the future is bright and sustainable.

JOHN BEL EDWARDS
GOVERNOR, STATE OF LOUISIANA



“SINCE 2016, MORE THAN 350 ECONOMIC DEVELOPMENT PROJECTS HAVE BEEN ANNOUNCED, REPRESENTING MORE THAN \$80 BILLION IN INVESTMENT AND MORE THAN 70,000 JOBS.”

The Louisiana Economic Development team has a singular mission: creating jobs and economic opportunity for the people of our state. Success requires that we be multi-faceted, seeking investments across the widest possible range of sectors, in the broadest possible geographic area encompassing every region of the state, supporting small businesses and large multinational conglomerates alike. The story of 2022 is one of exceptional achievement at both ends of that diverse business spectrum.

Capital investments from major national and international corporations have risen annually since 2017 and did so again in 2022. The scale of those investments is trending up as well: more than \$10 billion total project investment three years in a row; more than \$20 billion in each of the last two years. Since 2016, more than 250 economic development projects have been announced, representing more than \$80 billion in investment and more than 70,000 jobs.

Louisiana’s programs to foster business growth and entrepreneurship – including special programs for women, minority and veteran business owners – are among the nation’s best. One of the nation’s oldest and most respected business leadership development organizations, the Edward Lowe Foundation, presented LED with its inaugural Founders Award in 2022. The U.S. Treasury rewarded that small business development excellence by allocating Louisiana \$113 million in the State Small Business Credit

Initiative (SSBCI) – nearly nine times larger than the \$13.2 million we received in the 2010 initiative. Those federal funds will benefit businesses statewide for years to come.

Investment decisions often hinge on a company’s ability to recruit, train and sustain a skilled workforce in the state, and Louisiana continues to set the pace in this critical area. LED FastStart was honored by the site selection trade publication Business Facilities in 2022 as the best customized training program in America for a record 13th consecutive year. LED FastStart’s ability to keep Louisiana on the leading edge of workforce development is a remarkable success story, one made possible by the support of higher education leaders and a strong commitment from the Legislature and governor to invest in our workers.

Underlying success in these and all areas is an approach to economic development that prioritizes public-private and state-federal partnerships. The impact of that collaborative approach has never been more evident than in 2022. From a successful NASA space launch made possible by aerospace workers trained at Louisiana colleges to a \$50 million federal grant kick-starting an offshore wind-powered hydrogen energy plan in south Louisiana, partnerships powered investment and innovation. Together, we will ride the momentum of 2022 into 2023 in our never-ending pursuit of prosperity for our state and its people.

DON PIERSON

SECRETARY, LOUISIANA ECONOMIC DEVELOPMENT

TABLE OF CONTENTS



Unique Advantages Drive New Business	10
Business Expansion Booms Statewide	14
International Commerce Leader	18
Energy Transition Powers New Investment	20
Diversifying and Innovating	24
Acclaimed Entertainment Industry Thrives	29
LED FastStart Recruits, Trains and Sustains	32
State-Federal Collaboration Creates Opportunity	34
Supporting Small Businesses and Start-ups	36
Strategically Developing Our Communities	38
Rural Revitalization Efforts Intensify	41
Award-Winning Economic Development	44

LOUISIANA'S FOUNDATIONAL BUSINESS STRENGTHS

INFRASTRUCTURE ADVANTAGES

Superior transportation logistics include 6 deep draft ports, 6 Class I railroads, 6 Interstate highways, 7 primary airports, 50,000 miles of pipeline.

GLOBAL ACCESS

Mississippi River serves as a gateway to international markets via the Gulf of Mexico, and provides direct access by barge to 17 states.

SECTOR DIVERSITY

Key industries run the gamut from traditional verticals like energy, manufacturing and agribusiness to emerging sectors like tech and life sciences.

COMMITMENT TO SUSTAINABILITY

Only climate action plan in the Gulf South is supported by an “all of the above” energy production and emissions reduction strategy.

ABUNDANT NATURAL RESOURCES

Natural gas, timber and salt are among the state’s many essential and accessible raw materials.

HIGHER-ED PARTNERSHIPS

Universities and technical colleges collaborate closely with businesses and economic developers to prepare students for real-world jobs.

SUPPORT FOR INNOVATION

State programs drive investment in life sciences, water management, technology, aerospace, digital media and more.



LOUISIANA'S UNIQUE BUSINESS ADVANTAGES DRIVE NEW INVESTMENT, MANUFACTURING JOB GROWTH



Louisiana is the portal to the Gulf of Mexico and the world, connecting 17 states navigable by barge from the Mississippi River. *(Port NOLA photo)*

Companies establishing their first Louisiana ventures are welcomed by a pro-business ecosystem committed to supplying the resources necessary for success. In 2022, new business development projects reinforced the state's standing as an ideal location for energy, advanced manufacturing and process industries investment, while also accelerating the growth of emerging sectors like life sciences and technology. The potential long-term impact on job creation is clear: manufacturing jobs in Louisiana, which declined during the pandemic, ended the year at their highest level since 2015.



Origin Materials, a carbon-negative materials company committed to leading the global transition to sustainable materials, is investing at least \$750 million to develop a plant-based polyethylene terephthalate (PET) facility in Geismar. PET is used in packaging, textiles, garments, and other products. *(Origin Materials photo)*

2022 TOP 10 NEW BUSINESS PROJECT WINS

Company Name	Parish	Region	New Jobs	CapEx
Clean Hydrogen Works	Ascension	Capital	1,472	\$7.5 Billion
Arbor Renewable Gas	West Baton Rouge	Capital	142	\$800 Million
Origin Materials	Ascension	Capital	1,057	\$750 Million
Calucem	Orleans	Southeast	228	\$35 Million
CMIT	Caddo	Northwest	25	\$19.5 Million
Aquaspersions	St. Martin	Acadiana	126	\$7.5 Million
Advanced Call Center Technologies	Caddo	Northwest	914	\$1.5 Million
Greenberry Industrial	Jefferson Davis	Southwest	244	\$500,000
Faubourg Brewing Company	Orleans	Southeast	10	\$100,000
Excella	Orleans	Southeast	150	n/a



Aquaspersions Limited, a global manufacturer of water-based additives, is constructing a new production facility in St. Martin Parish that will primarily supply critical components for the growing nitrile glove industry, including SafeSource Direct’s two Louisiana locations, establishing a key PPE supply chain base in the state. *(Aquaspersions photo)*

“OUR CHOICE OF LOUISIANA FOR OUR FIRST ALL-NEW MANUFACTURING PROJECT IN THE U.S. IS DUE TO THE AVAILABILITY OF STRATEGIC RAW MATERIALS AND ACCESS TO WATERWAYS AND SKILLED LABOR.”

YURI BOUWHUIS, PRESIDENT AND CEO - CALUCEM

Specialty cement manufacturer Calucem entered the U.S. market in 2022, developing a \$35 million manufacturing facility in New Orleans East. A subsidiary of Spain-based Cementos Molins, Calucem is the world's second-largest producer of calcium aluminate cement, a high-performance product popular in a variety of commercial and industrial uses. *(Calucem photo)*



EXISTING BUSINESSES CONTINUE TO REINVEST AND EXPAND IN EVERY CORNER OF THE STATE

The most compelling evidence of Louisiana's exceptional business climate can be found in the pace and scale of the reinvestments that existing companies are making in industries across the state. The list of 2022 expansions is long and diverse, from a multi-billion-dollar expansion of liquefied natural gas production and export facilities in coastal south Louisiana to a series of lumber mill modernization projects in rural central and north Louisiana and multiple manufacturing projects in between.



LNG is loaded at Venture Global Calcasieu Pass for shipping overseas. International exports from the newly commissioned facility began early in 2022, supplying LNG to Europe during a critical supply crunch. (Venture Global LNG photo)



BASF's \$800 million in 2022 investments deepens its more than 60-year-long commitment to Louisiana, creating 37 new positions and 147 indirect jobs for the Capital Region. *(BASF photo)*

“THANKS TO OUR STRATEGIC LOCATION AND INFRASTRUCTURE, ACCESS TO COMPETITIVE RAW MATERIALS, HIGHLY-SKILLED WORKFORCE AND STRONG GOVERNMENT SUPPORT, BASF HAS NOW INVESTED MORE THAN \$2 BILLION IN NEW PROJECTS AND IMPROVEMENTS AT THE GEISMAR SITE.”

JERRY LEBOLD, SENIOR VICE PRESIDENT AND GENERAL MANAGER - BASF

2022 TOP 10 EXPANSION PROJECT WINS

Company	Parish	Region	Retained Jobs	New Jobs	CapEx
* Venture Global LNG	Plaquemines	Southeast	0	978	\$4.7 Billion
CF Industries	Ascension	Capital	521	414	\$2 Billion
Port NOLA/LIT	St. Bernard	Southeast	n/a	n/a	\$1.8 Billion
CLECO	Rapides	Central	1,335	35	\$900 Million
BASF	Ascension	Capital	1,190	184	\$780 Million
Linde	Ascension	Capital	105	69	\$327 Million
CF Industries	East Baton Rouge	Capital	521	48	\$198.5 Million
Syrah Technologies	Concordia	Central	19	88	\$176 Million
American Electric Power	Caddo	Northwest	20	83	\$100 Million
WestRock	Jackson	North Central	450	0	\$97 Million
Guidry's Catfish	St. Martin	Acadiana	34	32	\$69.6 Million

* Increased capex from \$8.5B project announcement (2016) to \$13.2B final investment decision (2022)



American Electric Power, one of the largest electric energy companies in the U.S., is developing a new \$100 million Shreveport Transmission Control Center, which will control the operations of its transmission system in the regional power grid. The facility will also support the real-time operational technology hardware and software required to assess, monitor and support the entirety of AEP's national transmission grid. (AEP photo)

“LOUISIANA HAS ALL THE RIGHT ELEMENTS FOR THE DEVELOPMENT OF NEW TECHNOLOGY IN THE MANUFACTURING SECTOR, INCLUDING A VISION FOR SUSTAINABLE DEVELOPMENT THAT ALIGNS WELL WITH OUR VALUES.”

SHAUN VERNER, CEO - SYRAH RESOURCES

In July 2022, the Department of Energy issued a \$102.1 million loan to Syrah Technologies LLC for its Vidalia expansion. The facility produces graphite-based active anode material (AAM) used in lithium-ion batteries for electric vehicles (EVs) and other clean energy technologies and is the only vertically integrated, large-scale AAM manufacturer outside of China, and the first of its kind in the United States. *(Syrah Technologies LLC photo)*



LONG-RANGE APPROACH TO INTERNATIONAL COMMERCE POSITIONS THE STATE FOR GROWTH

Louisiana's long-standing status as a national pacesetter in foreign direct investment is no accident. It is the result of sustained relationship building and reinvestment. In 2022, that manifested in

Louisiana hosting French President Emmanuel Macron and an international delegation at Americas Competitiveness Exchange (ACE) to forge new partnerships; leading economic missions to the Netherlands, France and London to explore common challenges, solutions and investment opportunities with major global corporations and resiliency thought leaders; and announcing the \$1.8 billion Louisiana International Terminal project at the Port of New Orleans.



With the goal of improving foreign investment in Louisiana, Gov. John Bel Edwards led a delegation of business and state leaders on an economic development mission to London in September. (LED photo)



The Port of New Orleans is developing a \$1.8 billion Louisiana International Terminal (LIT) container facility that will dramatically increase Louisiana’s import and export capacity. At full build-out, LIT is expected to handle 2 million TEUs annually, taking advantage of the deeper 50-foot Lower Mississippi River Ship Channel and strengthening Louisiana’s ability to attract distribution centers, logistics services and value-added services. *(PortNOLA photo)*

2022 INTERNATIONAL INVESTMENT HIGHLIGHTS

\$1.8 BILLION

CAPITAL INVESTMENT FROM FOREIGN COMPANIES
THROUGH LED SUPPORT

1,221

NEW DIRECT JOBS

LEADING FOREIGN INVESTORS BY NATION



61%

CANADA



10%

AUSTRALIA



8%

SWEDEN



6%

GERMANY



5%

ITALY

'ALL-OF-THE-ABOVE' ENERGY TRANSITION STRATEGY POWERS ECONOMIC EXPANSION AND EMISSIONS REDUCTION

Louisiana continued to demonstrate in 2022 how action on climate change spurs economic growth. By balancing continued support for vital oil and gas interests with an aggressive pursuit of hydrogen, solar, wind, alternative fuels, electric vehicle battery and CO2 emissions-reduction projects, the state emerged as a leader in the transition to clean energy even as it reinforced its critical role in



CF Industries continues to make good on its commitment to sustainability, investing over \$2 billion in Louisiana projects this past year to produce ammonia for clean energy applications while also decarbonizing its production process. *(CF Industries photo)*

the global LNG supply chain. A commitment to decarbonization has combined with new ideas, an established energy workforce and infrastructure advantages to position Louisiana for long-term economic growth, no matter how rapidly the sector transforms.

2020-22 ENERGY TRANSITION PROJECTS

\$26.9 BILLION

CAPITAL INVESTMENT

10,691

TOTAL NEW JOBS

16

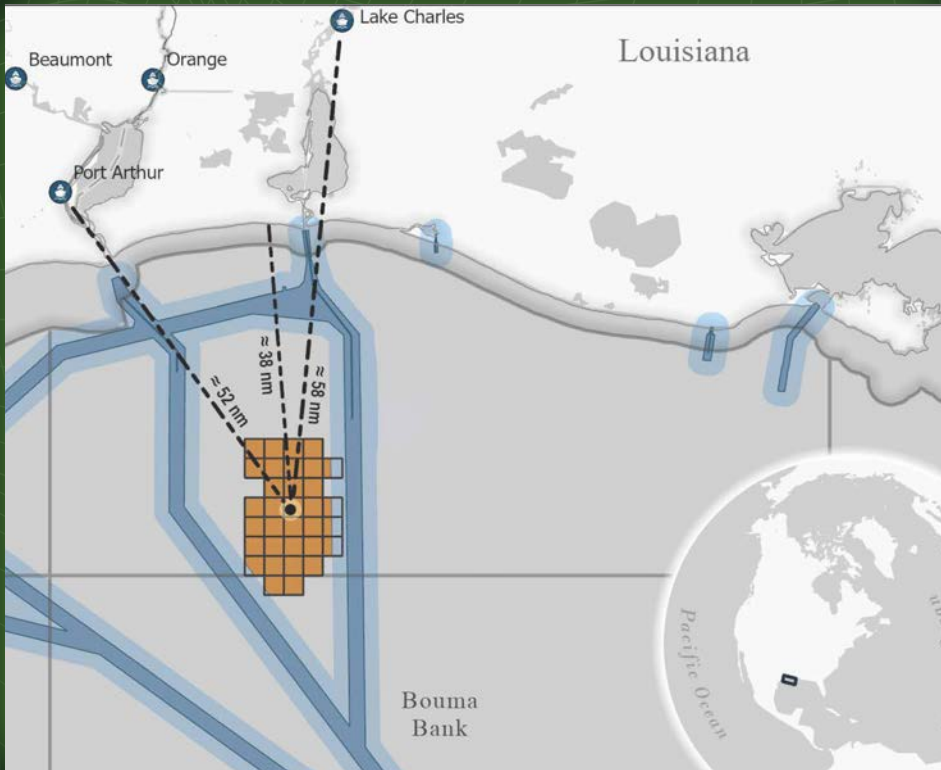
PROJECT WINS

“IN LOUISIANA, WE HAVE THE NATURAL RESOURCES, THE INGENUITY, THE GEOLOGY, THE PEOPLE AND THE INFRASTRUCTURE TO TRANSFORM THE POWER INDUSTRY AS WE KNOW IT.”

BILL FONTENOT, PRESIDENT AND CEO - CLECO CORPORATE HOLDINGS LLC



Hydrogen has been called the “fuel of the future” because its versatility can power cars, supply electricity and heat homes - all with zero carbon emissions. Louisiana is positioning itself as a major hub for hydrogen, backed by billions of capital investments. *(GNO, Inc. photo)*



The Bureau of Ocean Energy Management designated 74,275 acres off Louisiana's coast for offshore wind development. The area is capable of powering 740,000 homes. The state's location on the Gulf of Mexico make it a natural fit, and its skilled energy and offshore workforce adds another unique advantage. (BOEM photo)

Air Products is constructing a state-of-the-art hydrogen complex in Ascension Parish. The project will feature the world's largest site for carbon dioxide (CO₂) capture and permanent sequestration. Approximately 95 percent of the CO₂ generated at the new facility will be captured, compressed, and transported safely to permanent sequestration sites. (Air Products photo)



2020-22 ENERGY TRANSITION PROJECT WINS

Company	Specialty	Total New Jobs	CapEx	Parish
Air Products	Hydrogen and Carbon Capture	414	\$4.5B	Ascension
* Arbor Gas	Renewable Fuels and Carbon Capture	142	\$800M	West Baton Rouge
Arq	Fuel from Spent Mine Materials	43	\$40M	St. Charles
Bia Energy	Methanol and Carbon Capture	465	\$550M	Caddo
* CF Industries	Hydrogen, Ammonia and Carbon Capture	414	\$2B	Ascension
* CF Industries	Hydrogen, Ammonia and Carbon Capture	12	\$198.5M	Ascension
* Clean Hydrogen Works	Hydrogen, Ammonia and Carbon Capture	1,472	\$7.5B	Ascension
* CLECO Power	Carbon Capture	40	\$900M	Rapides
Delta Biofuel	Renewable Fuel	275	\$70M	Iberia
ElementUS	Rare Earth Processing	790	\$800M	St. John
Grön Fuels	Renewable Fuels, Hydrogen and Carbon Capture	5,585	\$9.2B	West Baton Rouge
Louisiana Green Fuels	Renewable Diesel and Carbon Capture	488	\$700M	Caldwell Parish
* Origin Materials	Biomass and Plant-Based PET Manufacturing	1,057	\$750M	Ascension Parish
PBF Chalmette Refining	Renewable Diesel	110	\$550M	St. Bernard
Renewable Energy Group	Renewable Diesel	381	\$825M	Ascension Parish
* Syrah Resources	Graphite Processing for EVs	88	\$176M	Concordia

* 2022 project win

CULTURE OF INNOVATION AND COLLABORATION SETS FOUNDATION FOR A MORE DIVERSE LOUISIANA ECONOMY

Louisiana's penchant for economic diversity and innovation was on full display in 2022 when the Space Launch System blasted Artemis, NASA's new moon and Mars mission, into space. With significant contributions from Michoud Assembly Facility in New Orleans, the SLS rocket is emblematic of the future-focused economic development mindset that has also resulted in major recent investments in the state's tech, life sciences and water management sectors. As hubs of innovation emerge across the state, Louisiana's workforce is rapidly diversifying as well,



More than 200 cancer researchers at the Louisiana Cancer Research Center investigate molecular signaling, genetics, how viruses cause cancer, tumor biology, population sciences, cancer prevention, drug discovery and treatments. *(LCRC photo)*

thanks to a host of strategic education partnerships that are preparing students to step into post-graduate careers that impact global health outcomes, facilitate space exploration, strengthen the nation's cybersecurity and build a more resilient coast.

NASA's Michoud Assembly Facility in New Orleans is "America's Rocket Factory," the nation's premiere site for large-scale space structures and systems. Michoud manufactures and assembles the core stages for NASA's Space Launch System (SLS) – the world's most powerful rocket that will soon send a crew of astronauts, including the first women and people of color, to the moon and eventually Mars. (NASA photo)

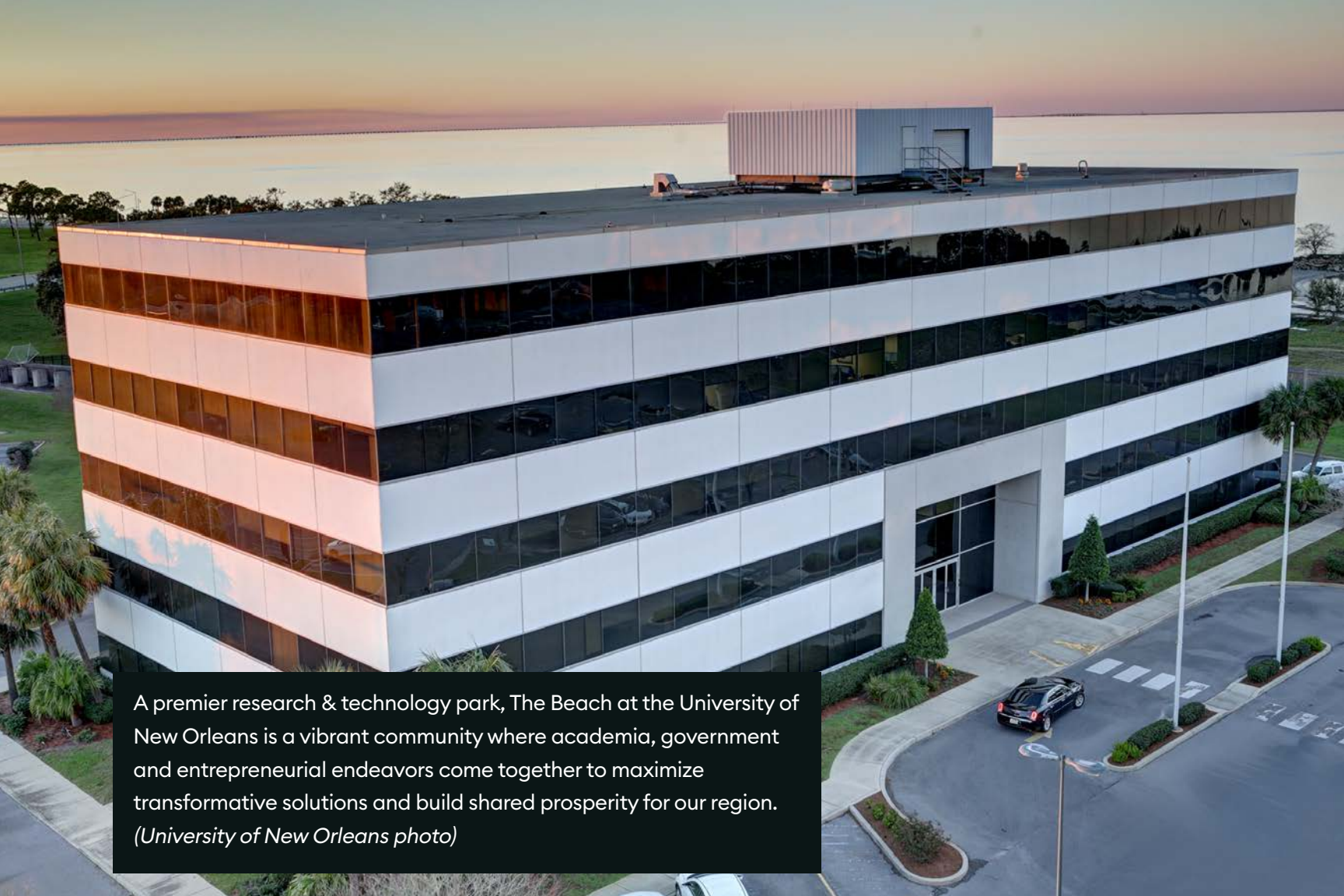




Opened in June, the Center for Molecular Imaging and Therapy's new \$19.5 million, 23,000-square-foot facility offers state-of-the-art equipment and firmly stations Shreveport at the forefront of medical research. (BRF photo)



From genome sequencing to advanced diabetes research, Louisiana's Life Sciences industry betters both humanity and the state's economy. Scan or visit LouisianaLifeSciences.gov to learn more.



A premier research & technology park, The Beach at the University of New Orleans is a vibrant community where academia, government and entrepreneurial endeavors come together to maximize transformative solutions and build shared prosperity for our region. *(University of New Orleans photo)*



Xavier University of Louisiana, a historically Black Catholic university in New Orleans, is primed to open a medical school and graduate school of health sciences through a collaboration with Ochsner Health. *(Xavier University of New Orleans photo)*



Musician Jon Batiste provided the 64th annual Grammy Awards with plenty of Louisiana flavor in April, winning five awards, including the prestigious Album of the Year honor. Batiste, who grew up in Kenner, entered the night with 11 nominations, the most of any artist for the 2022 awards.

(Getty Images photo)

ENTERTAINMENT INDUSTRY TRANSFORMATION STIMULATES ECONOMIC ACTIVITY AND JOB CREATION STATEWIDE

Across film, music, live performance, software development and digital media, Louisiana's entertainment ecosystem is increasingly dynamic and thriving. Significant and first-of-their-kind business incentives like the Motion Picture Production Program set the stage for attracting entertainment industry investment. The state's cast of creatives, skilled technical workers, state-of-the-art studios and world-class concert venues establish it as a premier entertainment destination. Meanwhile, strategic investments in higher education and entertainment workforce grants promise that the show will go on in Louisiana.



Scan or visit LouisianaEntertainment.gov to learn more about Louisiana's state-of-the-art facilities, skilled talent, production-friendly communities and competitive incentive programs that make it the perfect location for the entertainment industry.

ENTERTAINMENT DEVELOPMENT FUND

Created in 2017 to spur entertainment workforce training, ten organizations have received more than \$3.6 million in commitments spread throughout the entire state.

EDF RECIPIENT NAME	AMOUNT COMMITTED	REGION
Video Access Center/International Alliance of Theatrical Stage Employees	\$220,372	Southeast
Louisiana Prize Foundation	\$203,050	Northwest/Statewide
COOL Cooperative	\$49,000	Southeast
LSU Virtual Production Program	\$1,250,000	Capital
Digital Media Institute	\$500,000	Northwest
Loyola Department of Digital Filmmaking	\$248,975	Southeast
Nicholls State Film Studies Suite	\$47,171	Bayou
Music Industry Career Development University Partnership (MIC'D UP)	\$200,000	Southeast
UL Lafayette Visual FX Program	\$920,000	Acadiana
TOTAL AMOUNT COMMITTED	\$3,638,568	



Louisiana State University received a \$1.25 million award from the Entertainment Development Fund for its Virtual Production Program that uses real-time technology for compositing, visualization, and post-production. LED offers a number of programs for the industry to continue to thrive, such as the EDF and Entertainment Job Creation Program. From music to digital animation, Louisiana's entertainment industry builds upon its statewide ecosystem of skilled talent. (LSU photo)



Sony's "Where the Crawdads Sing" feature is among the many film projects that utilized Louisiana's unique settings and tax credits. The state's groundbreaking Motion Picture Production Program gives a tax credit of up to 40% and covers a portion of the costs for a range of needs, including equipment rentals and cast and crew salaries for work performed in Louisiana. *(Sony Pictures Entertainment photo)*

ENTERTAINMENT PROGRAMS

Entertainment Job Creation

Offering a 15% to 20% credit on wages that create well-paid new jobs for Louisiana residents.

Live Performance Production

Offering up to a 25% tax credit for live productions that is refundable or transferable on a one-time basis.

Motion Picture Production

Provides productions up to a 40% tax credit on production expenditures, including resident and non-resident labor.

Sound Recording

Providing an 18% tax credit for sound recording projects in the state.

A SKILLED WORKFORCE IS KEY TO BUSINESS SUCCESS. LED FASTSTART IS BEST IN CLASS IN TALENT DEVELOPMENT.



LED FastStart was named the best custom workforce training program in the U.S. for a record 13th consecutive year in 2022 by Business Facilities. FastStart offers a variety of solutions across recruiting and training, while also applying a long-term commitment to Louisiana's industries. *(LED FastStart photo)*

Companies across a diverse industrial spectrum can count on Louisiana to deliver a skilled workforce thanks to LED FastStart's cutting-edge technology, creative education partnerships, and a long-term commitment to sustaining the state's talent pipeline. This three-pronged approach to recruiting, training and sustaining skilled workers has a track record of success across aerospace, energy, manufacturing and tech sectors. LED FastStart – recognized by the influential site selector magazine Business Facilities as America's best customized workforce training program in 2022 for the 13th year in a row – continues to lead the charge, expanding access and increasing talent pools at no cost to qualified companies.

“LED FASTSTART CONTINUED ITS STRONG PUSH TOWARD EQUIPPING ITS WORKFORCE WITH THE SKILLS BEING SOUGHT BY NEW AND EXPANDING COMPANIES.”

ANNE COSGROVE, EDITORIAL DIRECTOR - BUSINESS FACILITIES

SETTING THE STANDARD

LED FastStart raises the workforce development bar by combining a culture of innovation with an unwavering focus on three fundamentals for success.

RECRUIT

An immersive, multi-platform approach to engaging modern job-seekers and creating deep and diverse talent pools.

TRAIN

Company-specific, custom-built combinations of new technology and proven techniques across a range of industries.

SUSTAIN

Innovative partnerships keep Louisiana’s talent pipelines filled with diverse, qualified candidates.



Scan or visit FastStart.OppportunityLouisiana.com to learn more about the top workforce recruiting and training program in the U.S. that creates a culture of innovation in Louisiana.

STRONG PARTNERSHIPS, AGGRESSIVE PURSUIT OF FEDERAL FUNDS INJECT MILLIONS INTO STATE ECONOMY

“Federal funding” has always been a large bucket, covering an array of investments designed to grow the national economy by spurring statewide economic development. That bucket was both wide and deep in 2022, with the announcement of major federal investments targeting broadband expansion, transportation infrastructure, clean energy, small business growth and Louisiana-based national defense. Among the major funding opportunities that LED helped to secure for the state were \$50 million from the Department of Commerce’s Build Back Better Challenge to help fund an offshore wind-powered hydrogen energy initiative in south Louisiana; up to \$113 million from the U.S. Treasury for the State Small Business Credit



Funding for the Monroe Biomedical Research and Innovation Park, to be located adjacent to the ULM campus, is coming from American Rescue Plan grants through the U.S. Department of Commerce’s Economic Development Administration. (ULM photo)

Initiative, designed to get money in the hands of the entrepreneurs with an emphasis on previously underserved individuals and communities; and more than \$130 million in Department of Defense investment in Louisiana military bases.

U.S. TREASURY AWARDS LOUISIANA UP TO \$113M TO SUPPORT SMALL BUSINESS GROWTH

LED is working with equity funds and financial institutions to disburse up to \$113 million in State Small Business Credit Initiative (SSBCI) funds via five small business support programs:

MICRO LENDING

Loans up to \$100k for businesses with up to 100 employees.

COLLATERAL SUPPORT

Loans for businesses with up to 100 employees that don't qualify for a conventional loan.

SMALL BUSINESS LOAN GUARANTY

Loans for businesses with up to 500 employees considered too high-risk for a conventional loan.

VENTURE CAPITAL

Support for expanding businesses under 500 employees in exchange for shares and a company role.

SEED CAPITAL

Financial support for startup and early stage businesses in exchange for shares and a role in the company.

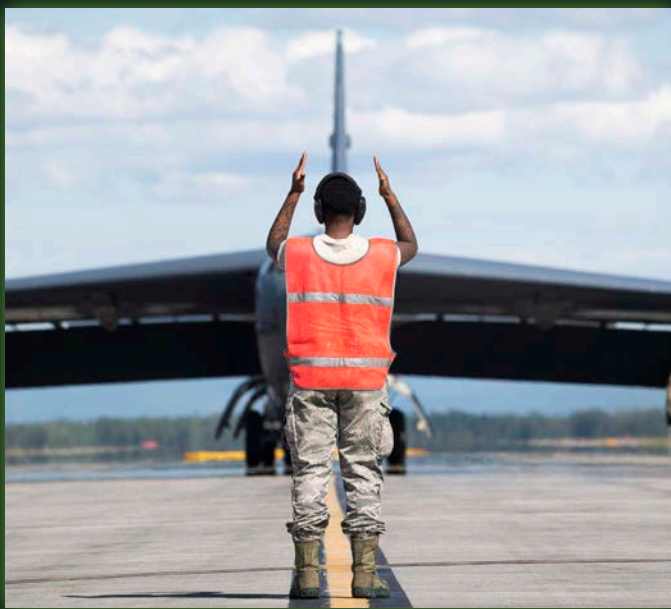
Read more at LouisianaSSBCI.com.

2022 DEPARTMENT OF DEFENSE PROJECTS

Military activity remains an important contributor to the Louisiana economy, generating about \$9.64 billion in annual economic impact for the state.

FORT POLK - VERNON PARISH

Over \$100 million in construction projects, including \$61 million for the Joint Operations Center, \$35.3 million for the Information Systems Facility and \$9 million for the Child Development Center.



BARKSDALE AIR FORCE BASE - BOSSIER PARISH

\$125 million designated for construction of a Weapons Generation Facility to consolidate weapon maintenance, storage and training functions required to support B-52 bomber missions.

ENGLAND AIRPARK - RAPIDES PARISH

\$2.1 million Defense Community Infrastructure Pilot grant for expansion that ensures safer and more rapid transport of vehicles following training rotations. LED is providing \$898,000 in matching funds for the project.

LED PROGRAMS SUPPORT EXISTING SMALL BUSINESSES AND EMPOWER ENTREPRENEURS

LED's Small Business

Services team deploys

nearly a dozen programs

supporting a range of small

business owners, including

women and minority small

business owners, veteran

and Gold Star spouse-

owned companies and

rural entrepreneurs. These

services and resources

aid small businesses at all growth stages, and additional programming

further targets communities that have previously struggled to attract

business capital and investment. New funding from state and federal

programs is creating unique opportunities to address critical needs and

invest in long-term economic growth. LED is committed to using those

funds effectively, equitably and strategically as it enhances the state's

growing reputation as a fertile location for start-ups to grow and prosper.



Seeking new ways to develop and deliver impactful programs, LED honors the companies that go above and beyond. Programs like the Rural Entrepreneurship Initiative help businesses overcome obstacles unique to rural communities, while the Diversity in Entrepreneurship Initiative accelerates the growth of minority- and women-owned businesses. *(LED FastStart photo)*

LED SMALL BUSINESS PROGRAMS

Bonding Assistance Program

Offering surety-backed bonds

CEO Roundtables

Enabling peer-to-peer learning opportunities for small business executives

Hudson Initiative

Helping small businesses access state purchasing and contracting opportunities

Louisiana Contractors Accreditation Institute

Presenting seminars and courses for small and emerging construction firms

Mentor-Protégé Recognition

Connecting small and emerging businesses with industry experts

Pathway to Assist Veteran Entrepreneurs (PAVE)

Creating access to the tools Louisiana veterans need to start or manage a business

STEP Grant

Assisting small businesses to grow exports

Small Business Loan Guaranty Program

Driving small business development and expansion

Small and Emerging Business Development

Offering training for small business growth tactics

System for Integrated Growth

Customizing strategic research and technical assistance to boost growth

Veteran Initiative

Providing veterans with access to state funding

Veterans First Business Initiative

Certification for veterans, active-duty or reserve military, and Gold Star spouse businesses

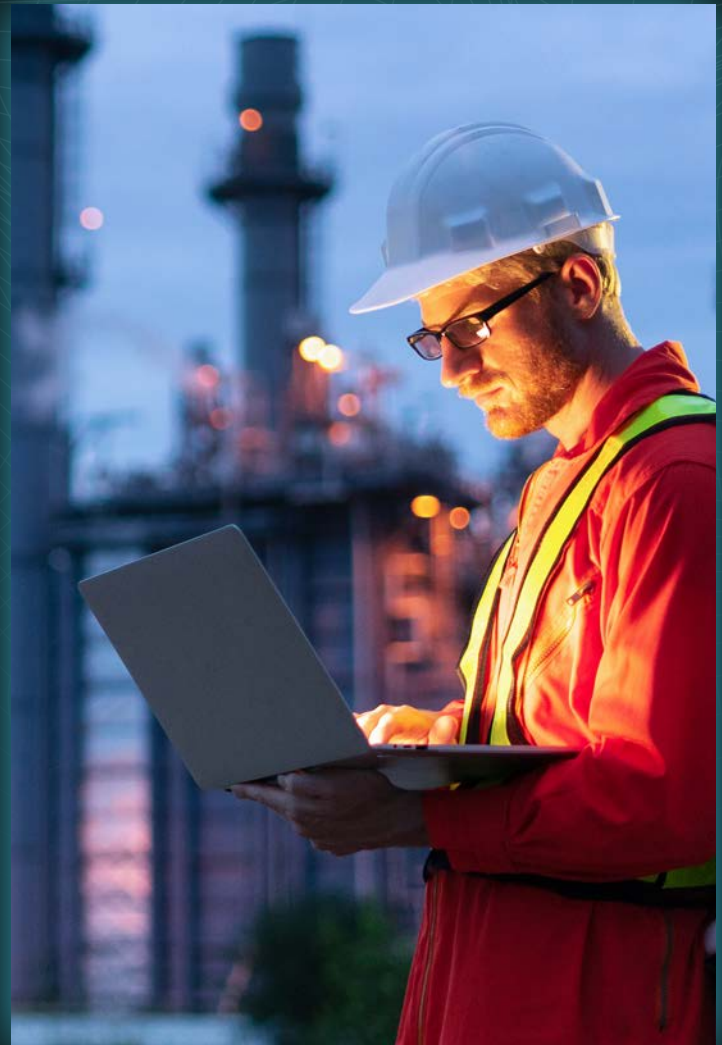
LED Sec. Don Pierson addresses attendees at April's Small Business Summit. Open to all small business owners and entrepreneurs in Louisiana, the summit featured informational sessions and engagement opportunities designed to facilitate contracting relationships with state agencies and other partners. *(LED photo)*



CERTIFIED SITE AND DEVELOPMENT READINESS PROGRAMS BENEFIT COMMUNITIES AND BUSINESSES ALIKE

Investors assessing potential locations for new and expanding business projects get a leg up in Louisiana, thanks to the state's commitment to economic development at the community level and its extensive catalog of certified shovel-ready sites. Site certification is part of the economic development portfolio in almost every state, but no state can boast a stronger **commitment to shovel-ready business investment** — or a more

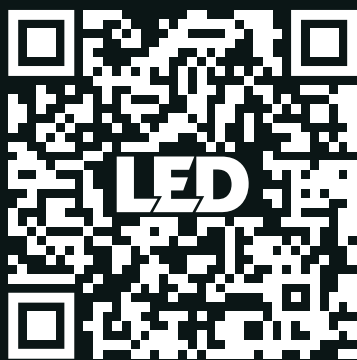
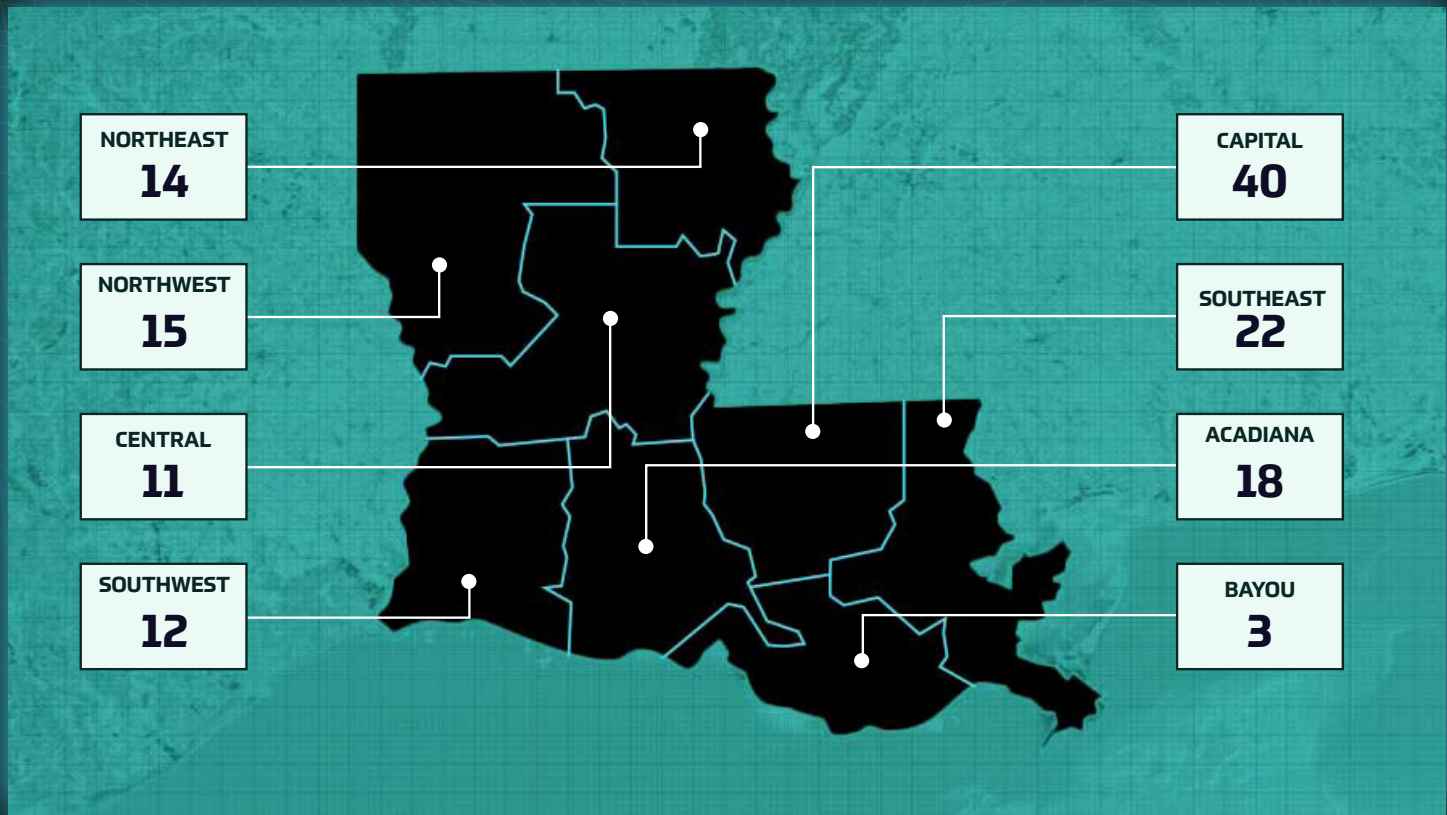
rigorous prequalification process — than Louisiana. With the added support of community-backed initiatives, companies can count on the state's commitment to help businesses of all sizes launch, grow and succeed over the long-term.



Louisiana boasts a strong commitment to shovel-ready business investment and no state has a more rigorous prequalification process. *(Getty Images photo)*

CERTIFIED SITES BY REGION

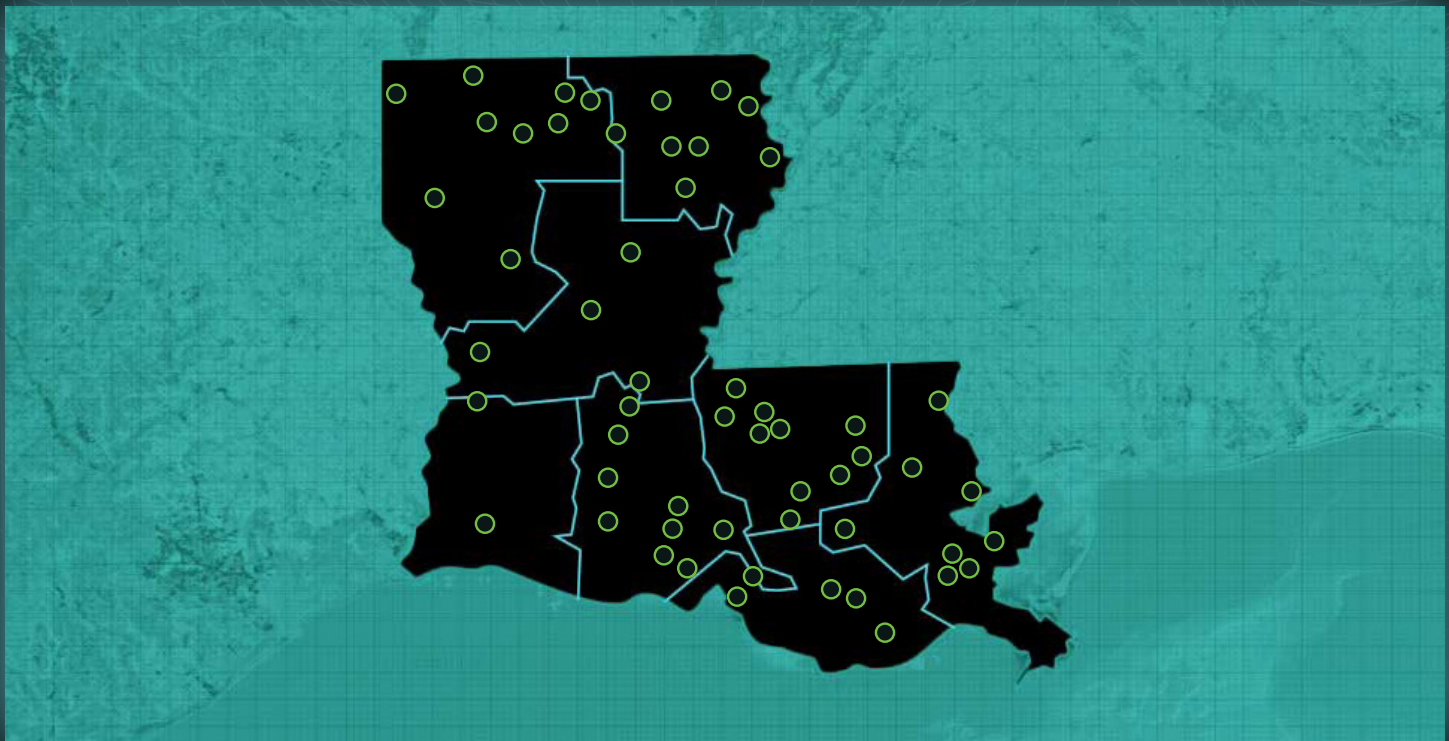
The LED Certified Sites program takes the guesswork out of site selection by ensuring locations are shovel-ready through an intensive inspection and review. To be certified, specific site details, such as zoning restrictions, title work, environmental studies, soil analysis and surveys, are assessed for compliance and authenticity.



Scan or visit: LouisianaSiteSelection.com/LED
Complete your site search by viewing our location databases, extensive library of documents, and maps for transportation, FEMA data, National Wetlands Inventory and incentive boundaries.

LOUISIANA DEVELOPMENT READY COMMUNITIES

The LDR program aids communities to bolster their economic development strategy, fostering success and encouraging communities to create a plan to leverage assets and address challenges. From cultivating innovative leadership to evaluating each community's strengths and weaknesses, the LDR Program pushes community leaders to develop a guiding vision and actionable goals. And since its inception in 2011, the program has expanded from eight communities to over 50.



Abbeville	Delhi	Lafourche Parish	Springhill
Algiers	DeRidder	Lake Providence	St. Bernard Parish
Amite	Donaldsonville	Leesville	St. John Parish
Arcadia	Eunice	Minden	St. Martinville
Baker	Farmerville	Morgan City	Stonewall
Bastrop	Gonzales	Natchitoches	Tallulah
Bernice	Gretna	New Iberia	Ville Platte
Berwick	Hammond	New Roads	Vivian
Bogalusa	Harahan	Oak Grove	West Feliciana Parish
Broussard	Houma	Patterson	West Monroe
Bunkie	Jeff Davis Parish	Pineville	Winnsboro
Central	Jena	Rayville	Zachary
Covington	Killian	Ruston	
Crowley	Lafayette	Slidell	

AS THE STATE INTENSIFIES ITS RURAL REVITALIZATION EFFORTS, MAJOR BUSINESS INVESTMENTS FOLLOW



The global manufacturer of the iconic John Deere line is investing \$29.8 million to expand operations at its Thibodaux facility to begin producing medium-chassis cotton harvesting models that will replace existing models currently built in China. *(Deere & Company photo)*

“It is in the best interests of the citizens of the State of Louisiana to engage in a centralized and coordinated effort to further revitalization of rural Louisiana to be more productive, sustainable, healthy, attractive places to live,” Gov. John Bel Edwards proclaimed in establishing the Governor’s Advisory Council on Rural Revitalization in 2020. Two years later, the benefits of that sustained, multi-disciplinary effort were apparent as the state logged 20 rural economic development projects totaling \$1.5 billion in combined capital investment and creating more than 1,500 new direct and indirect jobs. Meanwhile, new federal funding earmarked for underserved communities began flowing into rural Louisiana as well, laying the groundwork for transformative change in the years to come.

2022 RURAL DEVELOPMENT PROJECT WINS

Company	Parish	Region	Retained Jobs	New Jobs	CapEx
CLECO	Rapides	Central	1,335	35	\$900 Million
Syrah Technologies	Concordia	Central	19	88	\$176 Million
WestRock	Jackson	Northwest	450	0	\$97 Million
Guidry's Catfish	St. Martin	Acadiana	34	32	\$69.6 Million
Alliance Compressors	Natchitoches	Northwest	520	174	\$45 Million
Cargill	St. Martin	Acadiana	70	0	\$34 Million
John Deere	Lafourche	Bayou	311	180	\$29.8 Million
Great Southern Wood Preserving	Avoyelles	Central	75	202	\$22.5 Million
Supreme Rice	Acadia	Acadiana	181	99	\$16.2 Million
International Paper	Natchitoches	Northwest	444	10	\$16.2 Million
Birla Carbon	St. Mary	Bayou	146	17	\$15.9 Million
RoyOMartin / Martco	Natchitoches	Northwest	684	0	\$9.5 Million
Aquaspersions	St. Martin	Acadiana	0	126	\$7.5 Million
Great Southern Wood Preserving	Avoyelles	Central	79	109	\$5.9 Million
The Healthy School Food Collaborative	St. Tammany	Southeast	3	214	\$4.6 Million
Linde	Concordia	Central	0	0	\$2.1 Million
Superior Group of Companies	East Carroll	Northeast	36	107	\$800,000
Haynes International	Bienville	Northwest	138	0	\$600,000
Greenberry Industrial	Jefferson Davis	Southwest	0	244	\$500,000
Oceaneering International	St. Mary	Bayou	0	0	\$500,000
TOTAL RURAL PROJECT WINS			4,522	1,637	\$1.447 Billion



Scan or visit LARuralEvolution.gov to learn how Louisiana's rural communities are innovating and expanding opportunities for citizens and businesses.

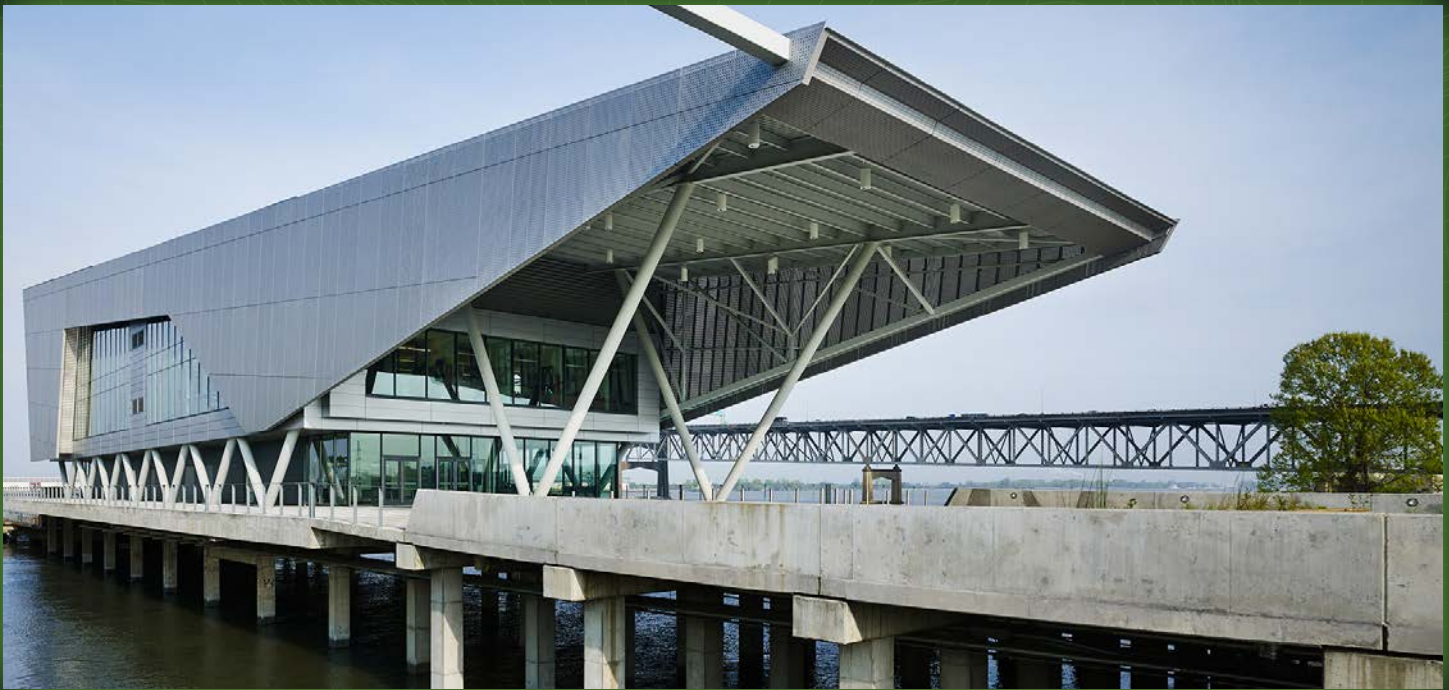


Louisiana is the second-largest producer of sugar in the country, dishing out nearly 2 million short tons. The sugar sector employs nearly 17,000 throughout the state and has a \$3 billion annual economic impact. Sugar production has been on the rise in recent years thanks to the adoption of high-yielding sugarcane varieties, along with investments in new harvesting combines. *(Tim Mueller photo)*



Louisiana's timber industry has an economic impact of above \$7 billion annually. Forestry-related employment accounts for more than 50,000 jobs in Louisiana, manufacturing lumber, plywood, paper and other products in plants across the state. *(Roy O Martin photo)*

LOUISIANA ECONOMIC DEVELOPMENT EFFORTS RECEIVE NATIONAL AND REGIONAL RECOGNITION



The International Economic Development Council named The Water Campus its top economic development project in the nation in 2022. Opened in 2015, it serves as a hub for public, private, non-profit and academic sectors to collaborate and develop innovative solutions for challenges affecting coastal communities and wetlands. *(The Water Institute of the Gulf photo)*

Once again in 2022, Louisiana was recognized for superior economic development efforts, including honors for job creation, total investments, new construction, industry sector diversity, workforce development excellence and programming for entrepreneurs. The successes are a testament to the state’s workforce strength, business climate, infrastructure and logistics superiority, commitment to energy transition investment, and powerful collaboration with regional and local economic development partners.



LED's Small Business Services team received the Edward Lowe Foundation's Founders Award, which recognizes individuals and organizations who champion the entrepreneurial spirit. *(LED photo)*

LED HONORS

Best Workforce Development and Talent Attraction Program in the U.S.: LED FastStart (13th consecutive year)

Edward Lowe Foundation Founders Award for the Nation's Best Entrepreneurship Programs

Silver Shovel Award for Project Performance (11th time in 13 years)

IEDC Gold Award for Resiliency, Recovery & Mitigation: The Water Campus

IEDC Gold Award for Special Purpose Website (LED Annual Report)

IEDC Silver Award for Economic Equity & Inclusion (Rural Revitalization)

SEDC Communications Awards Best in Class Award for Innovation

CiCi Award for Community Impact (SafeSource Direct and Louisiana Green Fuels)

Only state Accredited Economic Development Organization (AEDO) in U.S.

LED Sec. Don Pierson appointed to U.S. Department of Commerce's Investment Advisory Council and named America's Competitive Exchange (ACE) Ambassador

REGIONAL HIGHLIGHTS

NORTHWEST

1

- Teal Jones Group breaks ground on \$100 million sawmill modernization project in Plain Dealing.
- Alliance Compressors announces \$45 million Natchitoches Parish expansion to meet global demand for energy-efficient a/c, adding 174 new jobs and retaining 520.
- State-of-the-art, \$19.8 million Center for Molecular Imaging and Therapy facility creates life sciences hub in Shreveport.

NORTHEAST

2

- New Entergy call center creates 170 new direct jobs.
- Mid South Extrusion expands production lines in Ouachita Parish with a \$4.9 million capital investment that retains 170 jobs.
- EDA awards \$1.8 million grant to Biomedical Research and Innovation Park on ULM campus.

CENTRAL

3

- Cleco announces \$900 million project to add carbon capture and reduce emissions at Brane power generation facility.
- \$176 million investment from Syrah Technologies establishes state's first EV battery supply-chain foothold in Vidalia.
- Great Southern Wood Preserving announces two expansions at its Avoyelles Parish facility totaling \$28.4 million investment, 311 new direct and indirect jobs, 79 retained jobs.

SOUTHWEST

4

- Venture Global's Calcasieu Pass LNG facility begins operations as European demand for U.S. natural gas soars.
- \$250 million rebuilt BioLab chemical plant, damaged after Hurricane Laura, reopens in Lake Charles.
- Canfor breaks ground on new \$160 million sawmill facility in DeRidder.

ACADIANA

5

- Schlumberger centralizes North Gulf Coast operations at new \$11.5 million hub, creating 113 new direct and indirect jobs in Lafayette.
- Supreme Rice announces \$16.2 million investment to create parboil facilities and expand product line in Acadia Parish.
- UL Lafayette receives LED Entertainment Development Fund award to create visual FX program.

CAPITAL

6

- CF Industries invests \$2.2 billion in carbon-reduced ammonia production at new and expanding manufacturing facilities.
- BASF begins \$780 million final phase of \$1 billion expansion project at its Geismar MDI facility, creating 184 new direct and indirect jobs and retaining more than 1,000.
- Arbor Gas announces \$800 million renewable fuels facility that will create 142 new direct and indirect jobs in Port Allen.



BAYOU

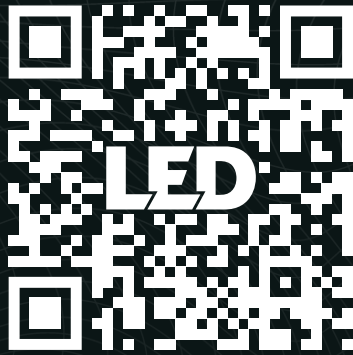
7

- \$29.8 million expansion of John Deere manufacturing facility shifts cotton harvester production from China to Thibodaux.
- \$15.9 million expansion of Birla Carbon facility in St. Mary Parish creates 17 new direct and indirect jobs, retains 146.
- Nicholls State University partners with the U.S. Bureau of Ocean Energy Management to develop Gulf Coast research database.

SOUTHEAST

8

- \$1.8 billion Louisiana International Terminal project in St. Bernard Parish creates 'historic' public-private partnership among state, Port of New Orleans, Ports America and TIL.
- Clean hydrogen project, H2theFuture, awarded \$50 million from EDA Build Back Better Challenge.
- General Dynamics Information Technology opens office to support \$136 million Navy contract.



DIG DEEPER ONLINE

**Scan to access additional content
or visit: LEDAnnualReport.com**

OpportunityLouisiana.com

617 North 3rd Street, Baton Rouge, LA 70802

225.342.3000 | 800.450.8115

This document was published a total cost of \$1,820.00. Two hundred copies of this public document are published in this first printing at a cost of \$1,820.00. The total cost of all printings of this document, including reprints, is \$1,820.00. This document was published by Louisiana Economic Development to market Louisiana for new business investment under authority of R.S. 36:101 (B). This material was printed in accordance with the standards for printing by state agencies established pursuant to R.S. 43:31. Printing of this material was purchased in accordance with the provisions of Title 43 of the Louisiana Revised Statutes.